

CONTENTS

GENERAL SPEC.

ENGINE

Fig. 1	CYLINDER HEAD	1
Fig. 2	CYLINDER	2
Fig. 3	CRANKSHAFT - PISTON	3
Fig. 4	VALVE	4
Fig. 5	CAMSHAFT - CHAIN	5
Fig. 6	OIL PUMP	6
Fig. 7	INTAKE	7
Fig. 8	CARBURETOR	9
Fig. 9	EXHAUST	11
Fig. 10	CRANKCASE	12
Fig. 11	CRANKCASE COVER 1	13
Fig. 12	STARTER	14
Fig. 13	CLUTCH	15
Fig. 14	TRANSMISSION	16
Fig. 15	SHIFT CAM FORK	17
Fig. 16	SHIFT SHAFT	18

CHASSIS

Fig. 17	FRAME	19
Fig. 18	FENDER	21
Fig. 19	SIDE COVER/OIL TANK	22
Fig. 20	REAR ARM	23
Fig. 21	REAR SUSPENSION	25
Fig. 22	STEERING	26
Fig. 23	FRONT FORK	27
Fig. 24	FUEL TANK	29
Fig. 25	SEAT	30
Fig. 26	FRONT WHEEL	31
Fig. 27	FRONT BRAKE CALIPER	32
Fig. 28	REAR WHEEL	33
Fig. 29	REAR BRAKE CALIPER	34
Fig. 30	STEERING HANDLE, CABLE	35
Fig. 31	FRONT MASTER CYLINDER	36
Fig. 32	STAND/FOOTREST	37
Fig. 33	REAR MASTER CYLINDER	38
Fig. 34	EMBLEMS	39
Fig. 35	GENERATOR	40
Fig. 36	FLASHER LIGHT	41
Fig. 37	METER	42
Fig. 38	HEADLIGHT	43
Fig. 39	TAILLIGHT	44
Fig. 40	HANDLE SWITCH, LEVER	45
Fig. 41	ELECTRICAL 1	46
Fig. 42	ELECTRICAL 2	47

INDEX (GENERAL SPEC.)

NUMERICAL INDEX

INDIVIDUAL SPEC.

Fig. 43	FRAME	48
Fig. 44	FENDER	49
Fig. 45	STAND/FOOTREST	50
Fig. 46	FLASHER LIGHT	51
Fig. 47	ELECTRICAL 1	52

INDEX (INDIVIDUAL SPEC.)

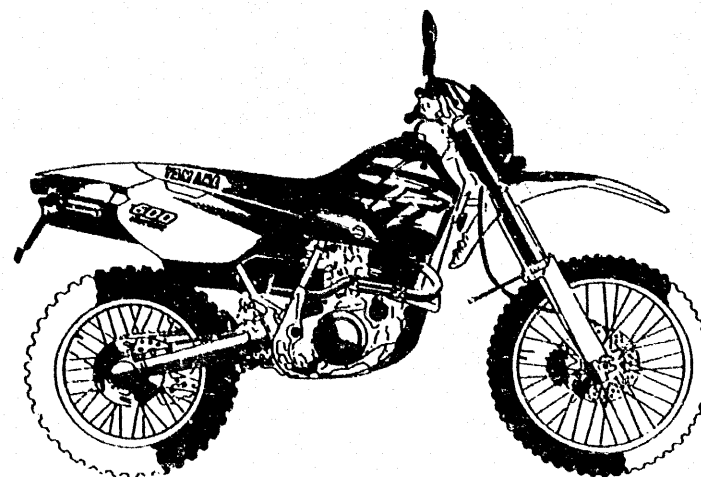
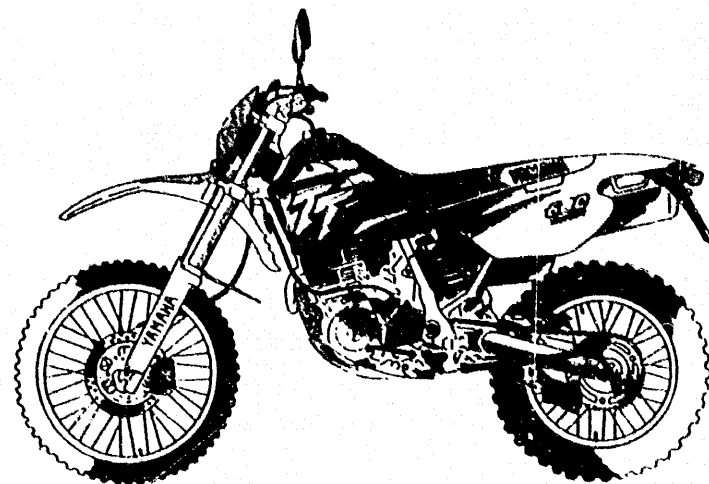
NUMERICAL INDEX



PARTS CATALOGUE

TT 660E - '96 (4GV4) (4LW3)
Italy/Europe

264GV-300E1
264LW-300E1



2008/5/21

A2

FOREWORD

This Parts Catalogue is related to the parts in use for the Yamaha TT 660E '96 (4GV4/4LW3). When you are ordering replacement parts for the TT 660E '95 (4GV4/4LW3), refer to this Parts Catalogue and quote both part numbers and part names correctly.

1. Modifications or additions which have been made after issue of this Parts Catalogue will be announced in the Belgarda Parts News. It is advisable that according to the Belgarda Parts News you make necessary corrections to the Parts Catalogue on hand to keep it up-to-date.

2. Abbreviations

The following abbreviations are used in this Parts Catalogue

- U.R. Use size (thickness) and/or number as required
- u.n. Use as many as you need
- A.P. Alternate Parts
- L.M. Local Made
- F # Frame No. (Applicable machine No.)

3. The Parts marked with (*) in the parts number column of this Catalogue are not supplied with by Belgarda or Yamaha, those have to be found locally.

4. Parts, which are to be supplied in the form of assemblies, are listed with an indication of one letter's space, and a dot (*) is put against the name of each part.

EXAMPLE

CARBURETOR ASS'Y

- JET, pilot
- NOZZLE, main

5. Indication of No. of constituent parts to assembly.

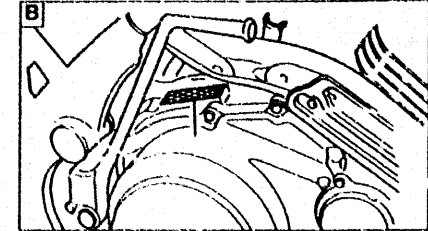
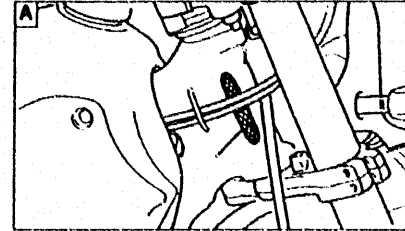
The numeral appearing to the right of each constituent part under the description indicates the quantity of such parts for each individual assembly unit.

EXAMPLE

REF. NO.	PART. NO.	DESCRIPTION	Q. TY.	REMARKS
1	2F5-83310-60	FRONT FLASHER LIGHT ASSY	2	
2	115-83311-60	• BULB (6V - 18 W)	1	
3	M1-83309-60	• REFLECTOR	1	

6. Initial Serial No. and Color Code

A Frame Serial No	4GV-010101 and following (I)
A Frame Serial No	4GV-010101 and following (I)
A Frame Serial No	ZD04LW30010095101 and following (SP)
B Engine Serial No	BL4LW-025101 and following (EUROPE)



Color Code	Color Name	Abbreviate
0206/0430	Purplish White Solid 1 Vivid Red Solid A	PVVS1VRS A

7. Applicable colors of graphics are represented in the "Remarks" column by the letter(s) appropriately picked out of the full word(s) showing such colors.

EXAMPLE

REF. NO.	PART. NO.	DESCRIPTION	Q. TY.	REMARKS
1	2N4-24110-00-X5	FUEL TANK COMP	1	MAXIM RED
2	3J1-24240-10	• GRAPHIC, fuel tank set	1	for MXR

8. The parts marked with (*) in the remarks column of this catalogue are supplied by Belgarda.

CONTENTS

GENERAL SPEC.

ENGINE

Fig. 1	CYLINDER HEAD	1
Fig. 2	CYLINDER	2
Fig. 3	CRANKSHAFT - PISTON	3
Fig. 4	VALVE	4
Fig. 5	CAMSHAFT - CHAIN	5
Fig. 6	OIL PUMP	6
Fig. 7	INTAKE	7
Fig. 8	CARBURETOR	9
Fig. 9	EXHAUST	11
Fig. 10	CRANKCASE	12
Fig. 11	CRANKCASE COVER 1	13
Fig. 12	STARTER	14
Fig. 13	CLUTCH	15
Fig. 14	TRANSMISSION	16
Fig. 15	SHIFT CAM FORK	17
Fig. 16	SHIFT SHAFT	18

CHASSIS

Fig. 17	FRAME	19
Fig. 18	FENDER	21
Fig. 19	SIDE COVER/OIL TANK	22
Fig. 20	REAR ARM	23
Fig. 21	REAR SUSPENSION	25
Fig. 22	STEERING	26
Fig. 23	FRONT FORK	27
Fig. 24	FUEL TANK	29
Fig. 25	SEAT	30
Fig. 26	FRONT WHEEL	31
Fig. 27	FRONT BRAKE CALIPER	32
Fig. 28	REAR WHEEL	33
Fig. 29	REAR BRAKE CALIPER	34
Fig. 30	STEERING HANDLE, CABLE	35
Fig. 31	FRONT MASTER CYLINDER	36
Fig. 32	STAND/FOOTREST	37
Fig. 33	REAR MASTER CYLINDER	38
Fig. 34	EMBLEMS	39
Fig. 35	GENERATOR	40
Fig. 36	FLASHER LIGHT	41
Fig. 37	METER	42
Fig. 38	HEADLIGHT	43
Fig. 39	TAILLIGHT	44
Fig. 40	HANDLE SWITCH, LEVER	45
Fig. 41	ELECTRICAL 1	46
Fig. 42	ELECTRICAL 2	47

INDEX (GENERAL SPEC.)

NUMERICAL INDEX

INDIVIDUAL SPEC.

Fig. 43	FRAME	48
Fig. 44	FENDER	49
Fig. 45	STAND/FOOTREST	50
Fig. 46	FLASHER LIGHT	51
Fig. 47	ELECTRICAL 1	52

INDEX (INDIVIDUAL SPEC.)

NUMERICAL INDEX

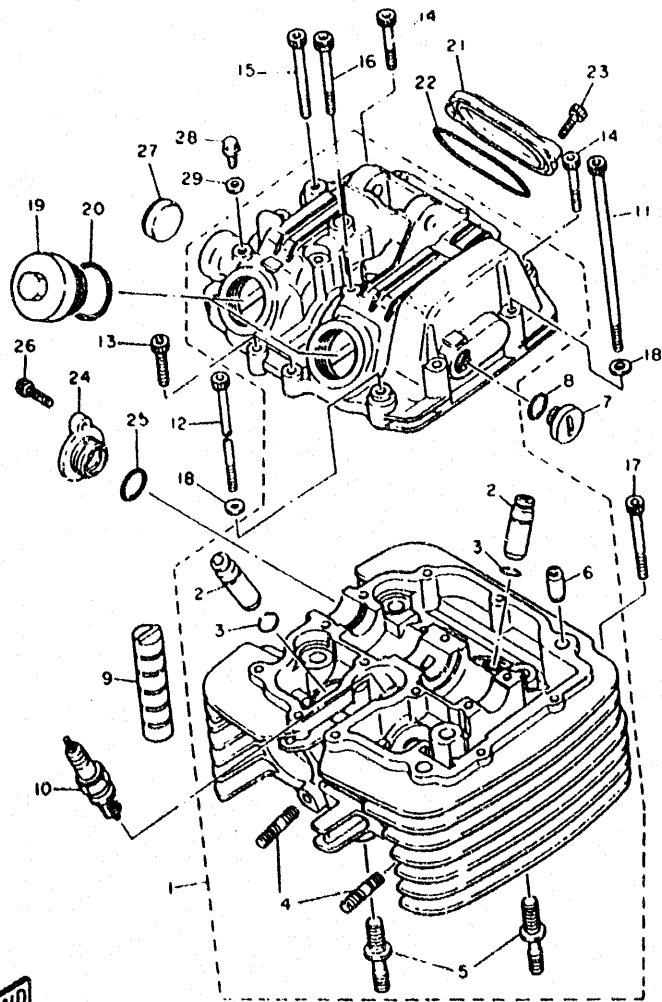


FIG. 1 CYLINDER HEAD

REF. NO.	PART NO.	DESCRIPTION	Q.TY	REMARKS
1	3TB-11101-01	CYLINDER HEAD ASSY	1	
2	4H7-11133-10	GUIDE, intake valve	4	
3	93440-12052	CIRCLIP	4	
4	90116-06475	BOLT, stud	4	
5	90116-10378	BOLT, stud	2	
6	99510-10114	PIN, dowel	2	
7	90340-14068	PLUG, straight screw	1	
8	93210-13657	O-RING	1	
9	583-11127-00	ABSORBER 3	2	
10	94701-00241	PLUG, spark (NGK DPR8EA-9)	1	
11	91317-06125	BOLT	2	
12	91317-06115	BOLT	1	
13	91317-06025	BOLT	4	
14	91317-06040	BOLT	2	
15	91317-06055	BOLT	6	
16	90109-063E9	BOLT	1	
17	91317-06050	BOLT	1	
18	92907-06600	WASHER, plate	3	
19	1L9-11186-00	COVER, cylinder head side 2	2	
20	93210-32172	O-RING	2	
21	5Y1-11187-00	COVER, cylinder head side 3	1	
22	93210-62446	O-RING	1	
23	91317-06018	BOLT	2	
24	3TB-12215-00	CAP, tensioner case	1	
25	93210-19522	O-RING	1	
26	91317-06020	BOLT	1	
27	90338-22207	PLUG	1	
28	90109-06418	BOLT	1	
29	90430-06014	GASKET	1	



4GV2354-4010

B2

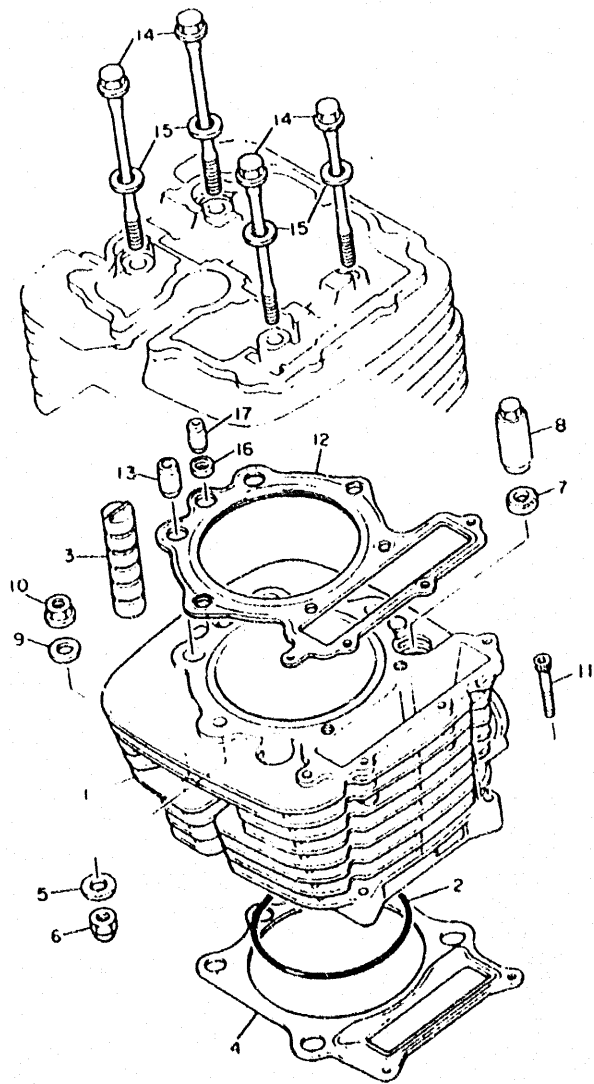
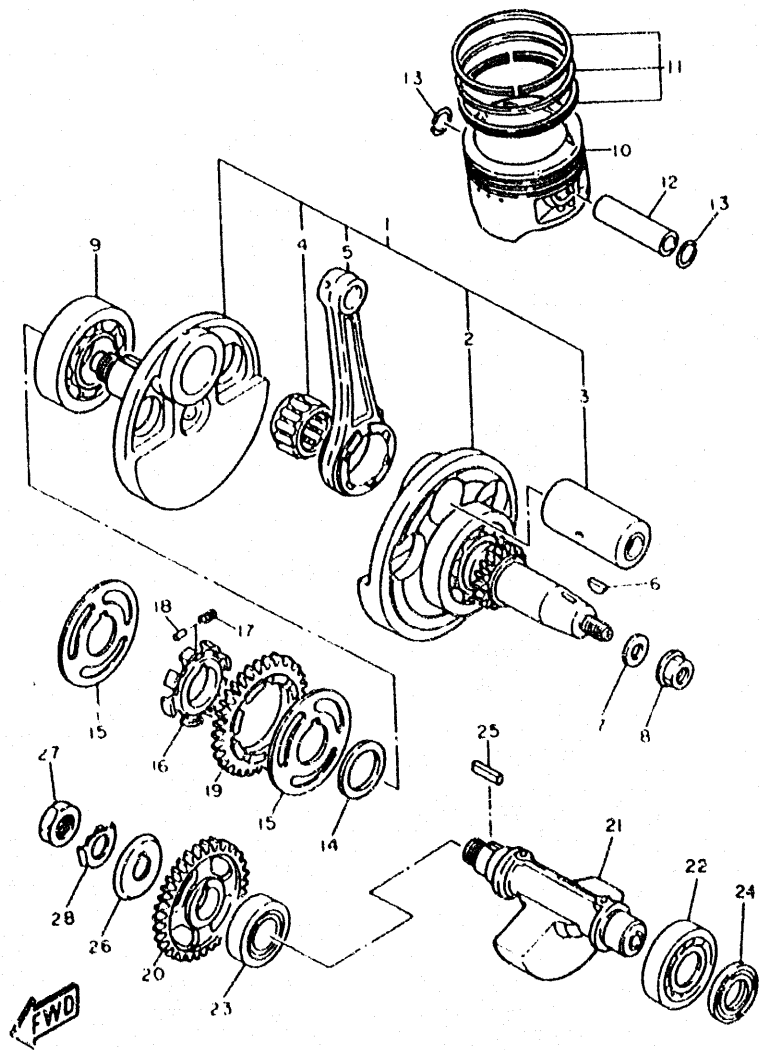


FIG. 2 CYLINDER

REF. NO.	PART NO.	DESCRIPTION	Q.TY	REMARKS
1	3TB-11310-00	CYLINDER	1	
2	93210-97524	O-RING	1	
3	583-11127-00	ABSORBER 3	2	
4	1VJ-11351-00	GASKET, cylinder	1	
5	90201-080L8	WASHER, plate	2	
6	90176-08026	NUT, crown	2	
7	90201-10590	WASHER, plate	2	
8	90179-10201	NUT	2	
9	90201-10124	WASHER, plate	2	
10	90179-10279	NUT	2	
11	91317-06035	BOLT	2	
12	2KF-11181-01	GASKET, cylinder head 1	1	
13	91810-05018	PIN, dowel	2	
14	90105-08505	BOLT, washer based	4	
15	30201-085L3	WASHER, plate	4	
16	90430-08178	GASKET	1	
17	99510-08016	PIN, dowel	1	

FWD
21Y260-8020

B3



31B351-0030

FIG. 3 CRANKSHAFT.PISTON

REF. NO.	PART NO.	DESCRIPTION	Q.TY	REMARKS
1	3TB-11400-00	CRANKSHAFT ASSY	1	
2	1VJ-W1141-00	CRANK 1	1	
3	1VJ-11681-00	PIN, crank 1	1	
4	93310-635D4	BEARING, cylindrical	1	
5	3TB-11651-00	ROD, connecting	1	
6	90280-16053	KEY, woodruff	1	
7	90201-141A3	WASHER, plate	1	
8	90179-14317	NUT	1	
9	93306-30702	BEARING (B6307)	1	
10	3TB-11631-00-Y0	PISTON (STD)	1	URRC
10	3TB-11636-00	PISTON (0.50MM O/S)	1	AP
10	3TB-11638-00	PISTON (1.00MM O/S)	1	AP
11	34L-11610-00	PISTON RING SET (STD)	1	URRC
11	34L-11610-20	PISTON RING SET (0.50MM O/S)	1	AP
11	34L-11610-40	PISTON RING SET (1.00MM O/S)	1	
12	1JK-11633-01	PIN, piston	1	
13	93450-24028	CIRCLIP	2	
14	90201-301F4	WASHER, plate	1	
15	34K-11565-02	WASHER, bearing cover	2	
16	5Y1-11496-01	BOSS, buffer	1	
17	90501-22721	SPRING, compression	8	
18	93605-10090	PIN, dowel	4	
19	2JT-11536-00	GEAR, drive	1	
20	5Y1-11531-00	GEAR, blanca wt 44t	1	
21	34K-11454-00	WEIGHT 1	1	
22	93306-30525	BEARING (B6305)	1	
23	93306-30560	BEARING	1	
24	93101-25106	OIL SEAL	1	
25	90282-05013	KEY, straight	1	
26	34K-11145-00	PLATE, breather 2	1	
27	90170-16343	NUT	1	
28	90215-16242	WASHER, lock	1	



5Y1110-2040

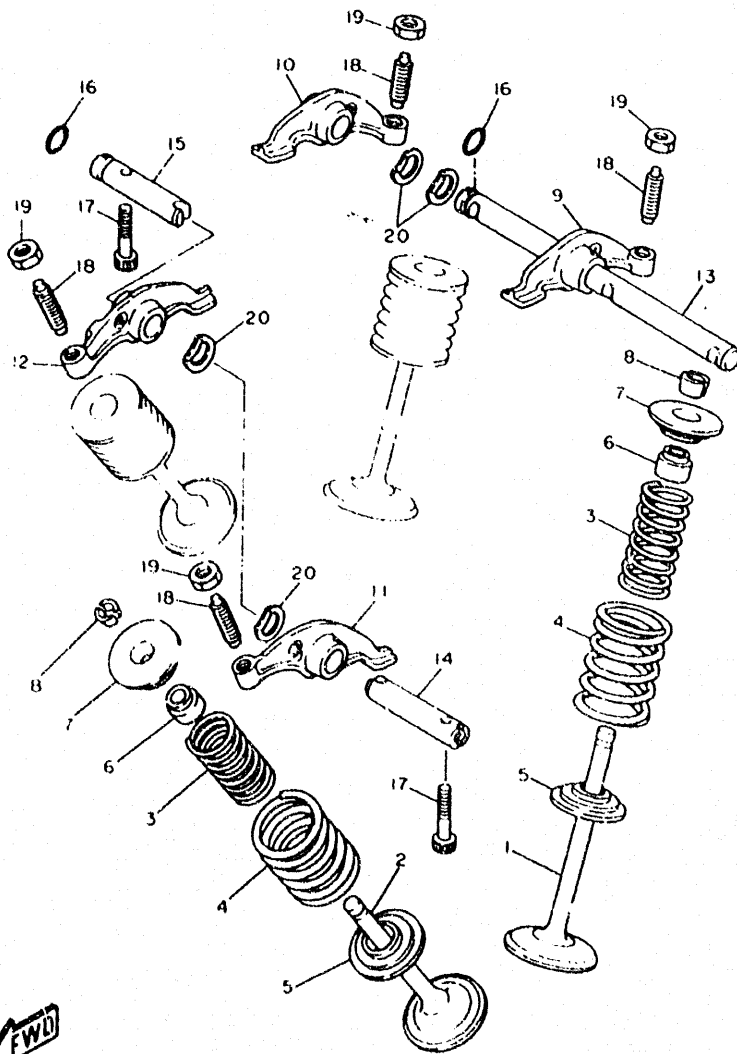


FIG. 4 VALVE

REF. NO.	PART NO.	DESCRIPTION	Q.TY	REMARKS
1	1VJ-12111-00	VALVE, intake	2	
2	1VJ-12121-00	VALVE, exhaust	2	
3	5Y1-12113-00	SPRING, valve inner	4	
4	5Y1-12114-00	SPRING, valve outer	4	
5	4H7-12116-00	SEAT, valve spring	4	
6	1J7-12119-01	SEAL, valve stem	4	
7	2F3-12117-00	RETAINER, valve spring	4	
8	1J7-12118-00	COTTER, valve	8	
9	34K-12151-00	ARM, valve rocker	1	
10	34K-12161-00	ARM, valve rocker 2	1	
11	34K-12162-00	ARM, valve rocker 3	1	
12	34K-12163-00	ARM, valve rocker 4	1	
13	2NX-12146-00	SHAFT, rocker	1	
14	2NX-12156-00	SHAFT, rocker 2	1	
15	2NX-12166-00	SHAFT, rocker 3	1	
16	93210-08521	O-RING	2	
17	90109-063E8	BOLT	2	
18	2NX-12159-00	SCREW, valve adjusting	4	
19	90170-06128	NUT	4	
20	90206-12075	WASHER, wave	4	

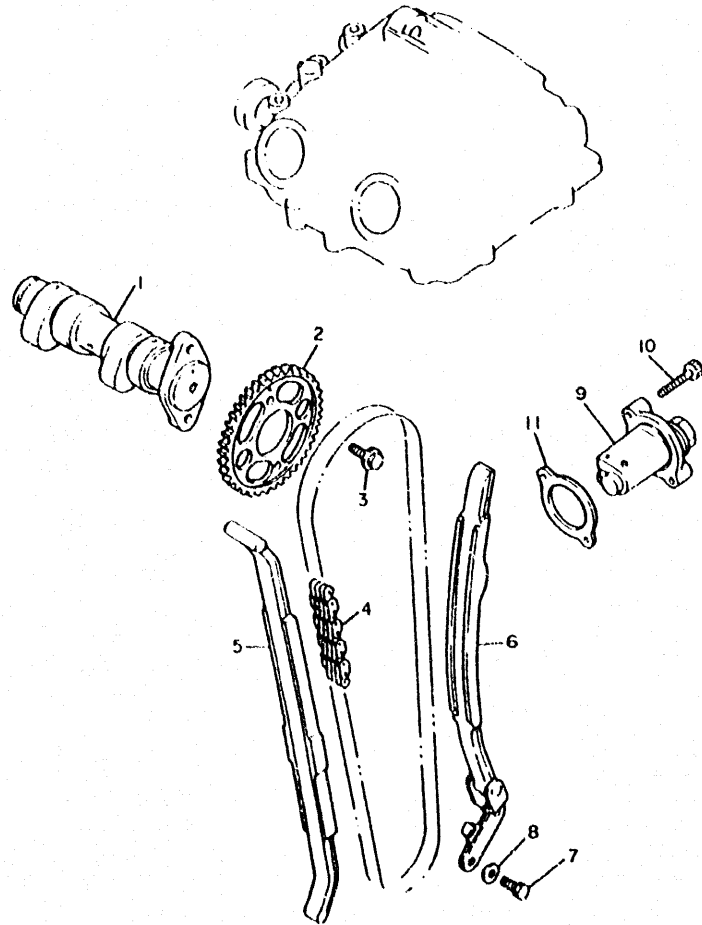


FIG. 5 CAMSHAFT.CHAIN

REF. NO.	PART NO.	DESCRIPTION	Q.TY	REMARKS
1	1JK-12171-00	CAMSHAFT 1	1	
2	3TB-12176-00	SPROCKET, cam chain	1	
3	90105-07087	BOLT, washer based	2	
4	94590-27126	CHAIN	1	
5	34K-12231-00	GUIDE, stopper 1	1	
6	34K-12241-00	GUIDE, stopper 2	1	
7	97017-06616	BOLT	2	
8	92907-06600	WASHER, plat	2	
9	3TB-12210-00	TENSIONER ASSY, cam chain	1	
10	91317-06025	BOLT	2	
11	4DW-12213-00	GASKET, tensioner case	1	



3AJ1351-8050

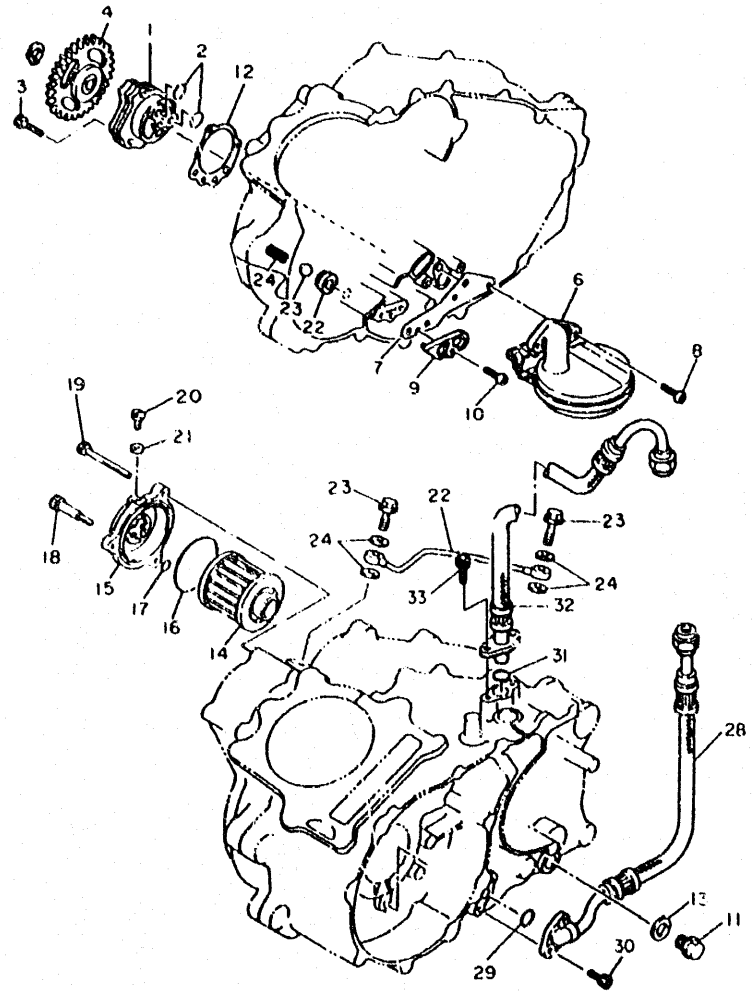


FIG. 6 OIL PUMP

REF. NO.	PART NO.	DESCRIPTION	Q.TY	REMARKS
1	3AJ-13300-01	OIL PUMP ASSY	1	
2	93210-13361	C RING	2	
3	91317-06035	BOLT	3	
4	3AJ-13325-00	GEAR, pump driven	1	
5	99009-11400	CIRCLIP	1	
6	5Y1-W1343-00	STRAINER COMP.	1	
7	4DW-13415-00	SEAL, oil strainer	1	
8	98507-06016	SCREW, pan head	2	
9	5Y1-15427-01	COVER, cap 2	1	
10	98507-06016	SCREW, pan head	1	
11	90340-14132	PLUG	1	
12	3SX-13329-00	GASKET, pump cover	1	
13	214-11198-01	GASKET	1	
14	4X7-13440-01	ELEMENT ASSY, oil cleaner	1	
15	2WK-13447-00	COVER, oil element	1	
16	932*0-64297	O-RING	1	
17	93210-07125	O-RING	1	
18	90109-06419	BOLT	1	
19	91317-06080	BOLT	2	
20	90149-05110	SCREW	1	
21	90430-05126	GASKET	1	
22	3AJ-13161-01	PIPE, delivery 1	1	
23	90401-08133	BOLT, union	2	
24	90430-08204	GASKET	4	
25	583-13113-00	SEAT, check ball	1	
26	93503-08007	BALL	1	
27	90501-043E0	SPRING, compression	1	
28	34K-13464-00	HOSE, oil 1	1	
29	93210-10197	O-RING	1	(93210-100A9)
30	9131M-06016	BOLT	2	
31	93210-15171	O-RING	1	
32	4GV-13465-00	HOSE, oil 2	1	
33	91317-06016	BOLT	2	



4GV2354-4060

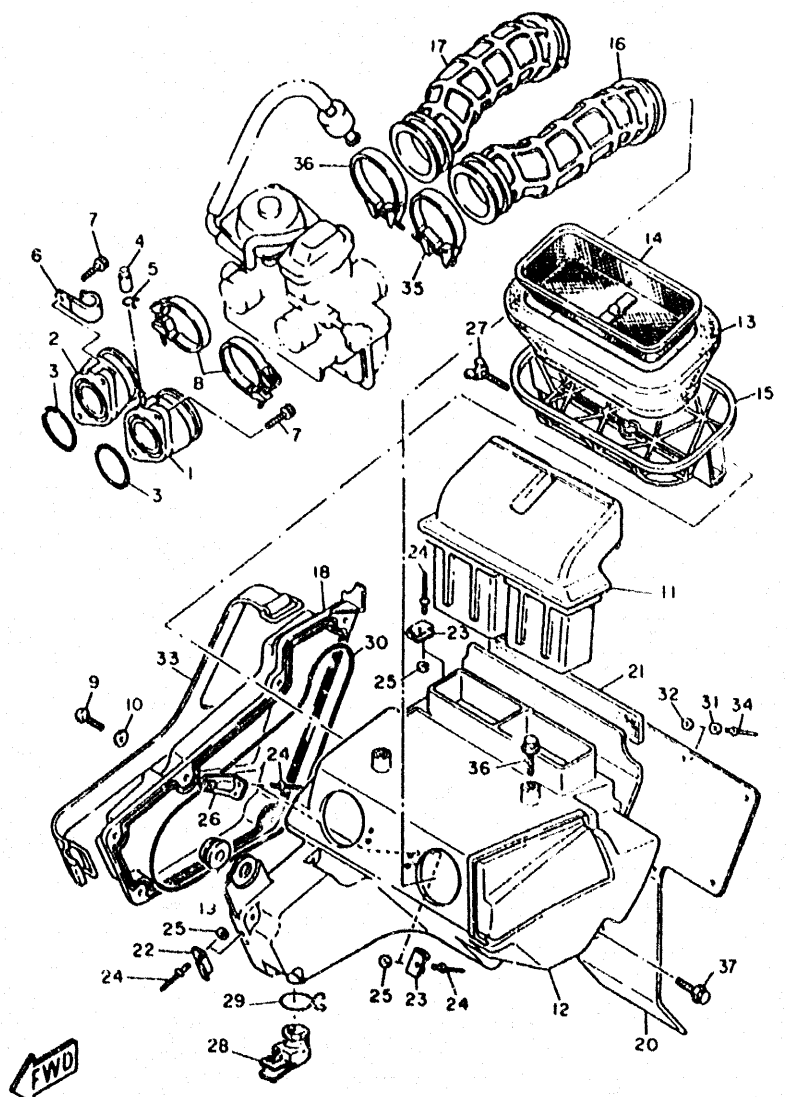


FIG. 7 INTAKE

P.F.F. NO.	PART NO.	DESCRIPTION	Q.TY	REMARKS
1	43F-13586-01	JOINT, carburetor 1	1	
2	1VJ-13596-00	JT, carburetor 2	1	
3	93210-36549	O-RING	2	
4	16G-13569-00	PLUG, blind	1	
5	90467-10035	CLIP	1	
6	90465-08028	CLAMP	1	
7	91317-06020	BOLT	4	
8	90460-46206	CLAMP, hose	2	
9	98507-05016	SCREW, pan head	6	
10	92907-05600	WASHER, plate	6	
11	4GV-E4430-00	DUCT, 1	1	
12	34K-14401-01	AIR CLEANER CASE ASSY	1	
13	34K-14451-01	ELEMENT, air cleaner	1	
14	34K-14458-02	GUIDE	1	
15	34K-14473-02	GUIDE	1	
16	43F-14453-00	JOINT, air cleaner	1	
17	4GV-E4454-00	JOINT	1	
18	34K-14412-01	CAP, case 1	1	
19	90480-13398	GROMMET	1	
20	34K-21621-01	FLAP	1	
21	34K-14426-00	DAMPER	1	
22	26A-14436-00	HOOK	1	
23	34K-14484-00	PLATE, cleaner case fitting	2	
24	90267-40073	RIVET, blind	6	
25	92907-04200	WASHER, plain	4	
26	34K-14493-01	STAY, 1	1	
27	90122-05010	BOLT, wing	1	
28	4GV-E4457-00	SEAL	1	
29	90467-20030	CLIP	1	
30	51Y-14462-00	SEAL	1	
31	90201-047A2	WASHER, plate	7	
32	92907-04200	WASHER, plain	7	
33	34K-14455-00	BAND	1	
34	90267-40073	RIVET, blind	7	
35	90460-51059	CLAMP, hose	1	

4GV1354-4071

B8

- 7 -

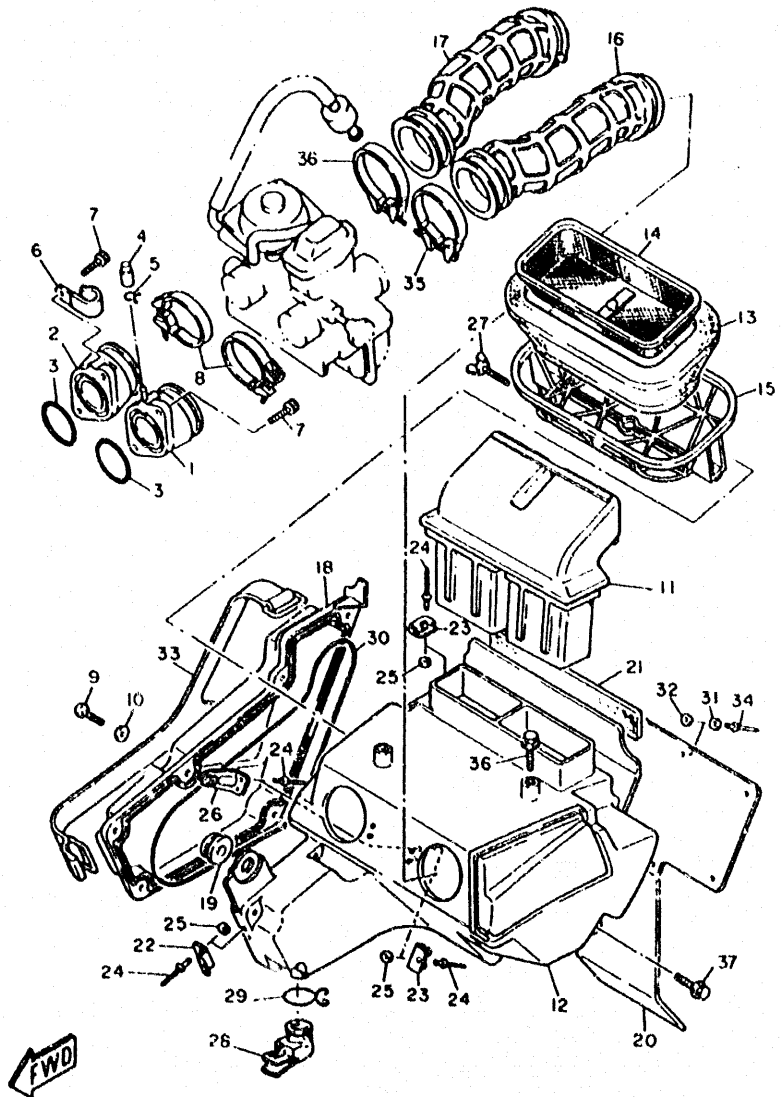


FIG. 7 INTAKE

REF. NO.	PART NO.	DESCRIPTION	Q.TY	REMARKS
36	90460-58015	CLAMP, hose	1	
37	95807-06012	BOLT, flg.	3	

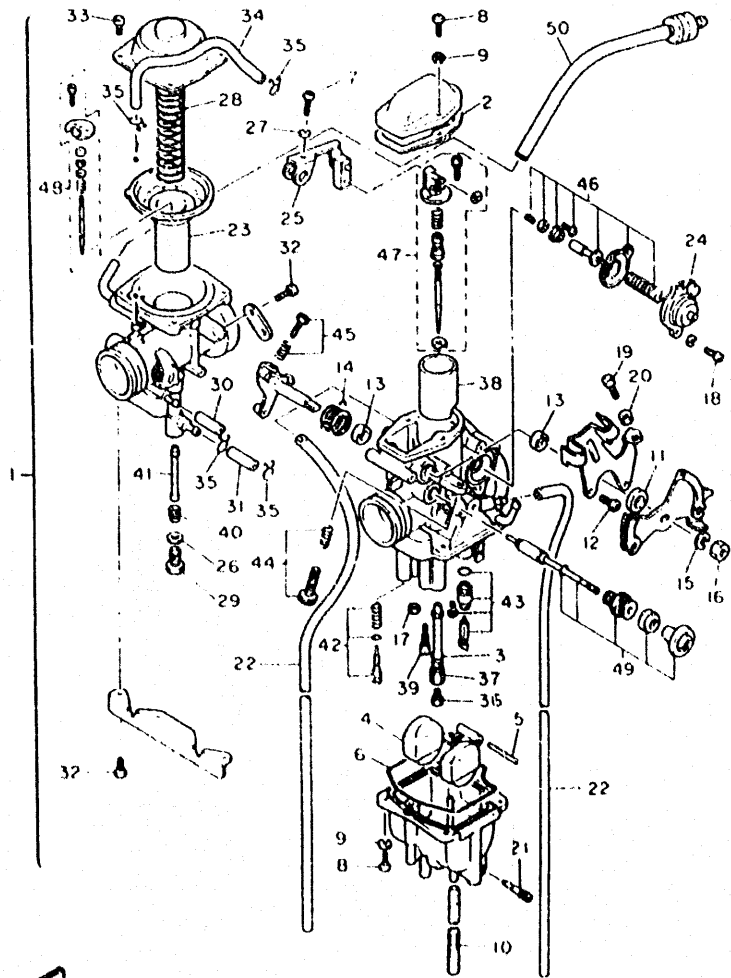


FIG. 8 CARBURETOR

REF. NO.	PART NO.	DESCRIPTION	Q.TY	REMARKS
1	4GV-14301-01	CARBURETOR ASSY 1	1	
2	5Y1-14198-00	GASKET	1	
3	360-24512-00	GASKET	2	
4	2JN-14385-00	FLOAT	1	
5	6E5-14386-01	PIN, float	1	
6	5Y1-14384-00	GSKT., float chamber	1	
7	98580-04016	SCREW, pan head	1	
8	98580-04014	SCREW, pan head	6	
9	92990-04100	WASHER, spring	6	
10	1JK-14197-00	PIPE	1	
11	1JK-14357-00	COLLAR	1	
12	214-24535-00	SCREW, pan head	2	
13	5Y1-14572-00	SEAL	2	
14	1XL-14131-01	SPRING, throttle valve	1	
15	5Y1-14356-00	WASHER, spring	1	
16	5Y1-14358-00	NUT	1	
17	5Y1-14536-00	GASKET	1	
18	98580-04010	SCREW, pan head	2	
19	98580-04020	SCREW, pan head	1	
20	30X-14358-00	NUT	1	
21	14T-14104-00	SCREW, air adjst.	1	
22	1JK-14197-00	PIPE	2	
23	1JK-14940-01	DIAPHRAGM, assy	1	
24	2JN-14293-00	COVER 1	1	
25	1JK-14291-00	CONNECTER COMP.	1	
26	7KF-14227-00	WASHER	1	
27	92990-04100	WASHER, spring	1	
28	1VJ-14286-00	SPRING	1	
29	7KF-14162-00	BOLT, holding	1	
30	5Y1-14349-00	PIPE	1	
31	30X-14148-00	PIPE	1	
32	98507-05010	SCREW, pan head	6	
33	98580-04010	SCREW, pan head	4	
34	5Y1-14149-00	PIPE	1	
35	5Y1-14159-00	CLIP	4	



4GV1354-4080

B 10

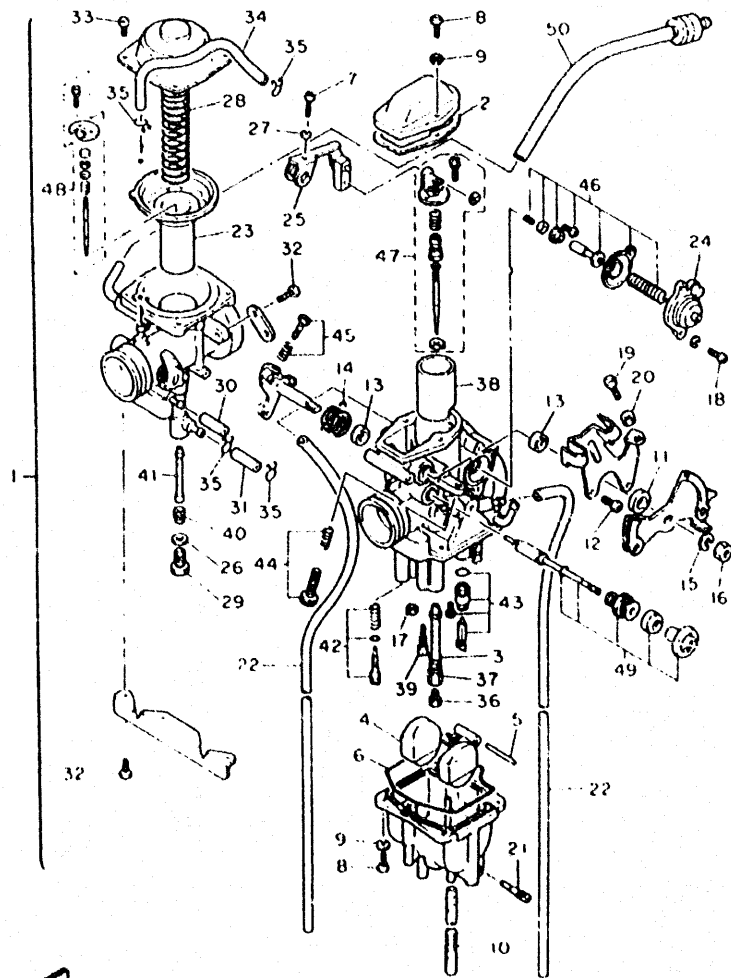


FIG. 8 CARBURETOR

REF. NO.	PART NO.	DESCRIPTION	Q.TY	REMARKS
36	288-14343-70	- JET, main (#140)	1	
36	288-14343-73	- JET, main (#145)	1	UR. STD
36	288-14343-75	- JET, main (#150)	1	
37	2KF-14341-00	- NOZZLE, main	1	
38	1XL-14312-55	- VALVE, throttle 1	1	
39	43F-14342-24	- JET, pilot (#48)	1	
40	30X-14343-55	- JET, main (#110)	1	
41	2KF-14355-00	- NOZZLE, main 2	1	
42	51Y-14105-00	- PILOT SCREW SET	1	
43	2JN-14107-00	- NEEDLE VALVE SET	1	
44	3GV-1490K-00	- STOP SCREW SET	1	
45	2NX-14103-00	- THROTTLE SCREW SET	1	
46	1JK-1490A-00	- DIAPHRAGM SET, 1	1	
47	4GV-1490J-10	- NEEDLE SET	1	
48	4GV-1490J-00	- NEEDLE SET	1	
49	2KF-1410A-00	- STARTER SET	1	
50	3TD-14197-00	- PIPE	1	

4GV1354-4080

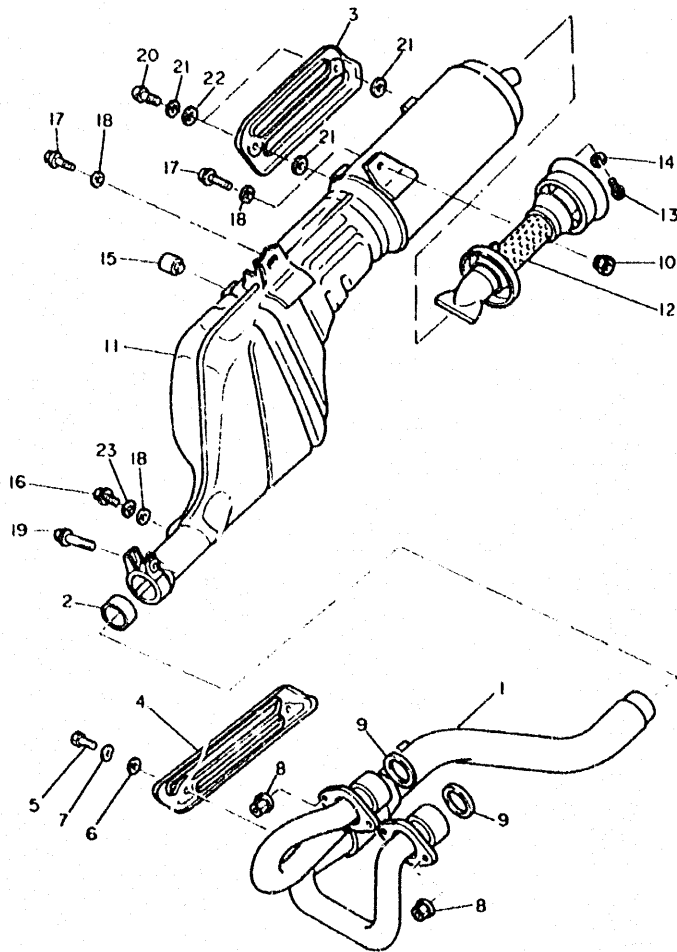


FIG. 9 EXHAUST

REF. NO.	PART NO.	DESCRIPTION	Q.TY	REMARKS
1	4GV-E4611-00	PIPE, exhaust 1	1	*
2	3YF-14755-00	GSKT., silencer	1	
3	4GV-E4728-00	PROTECTOR, muffler 2	1	*
4	4GV-E4628-00	PROTECTOR, exhaust pipe	1	*
5	90164-06017	SCREW, tapping	2	
6	4BD-14766-00	WASHER	4	
7	90206-06090	WASHER, wave	2	
8	90179-06668	NUT	4	
9	3YF-14613-01	GSKT., ext. 1	2	
10	90185-08838	NUT, nylon	1	*
11	4LW-E4711-00	MUFFL., 1	1	*
12	4GV-E4752-00	PIPE, outlet	1	*
13	9731M-06010	BOLT, hex.	2	*
14	92900-06400	WASHER, extl. toothed	2	*
15	4GV-F7114-00	STOPPER	2	*
16	90109-085E2	BOLT	1	
17	90109-085E3	BOLT	2	
18	90201-08326	WASHER, plain	3	
19	95027-08045	BOLT, flange	1	
20	98960-06010	SCREW, bind	2	
21	4BD-14766-00	WASHER	4	
22	90206-06090	WASHER, wave	2	
23	90204-08802	WASHER, sprg.	1	*



4GV1354-3090

B 12

- 11 -

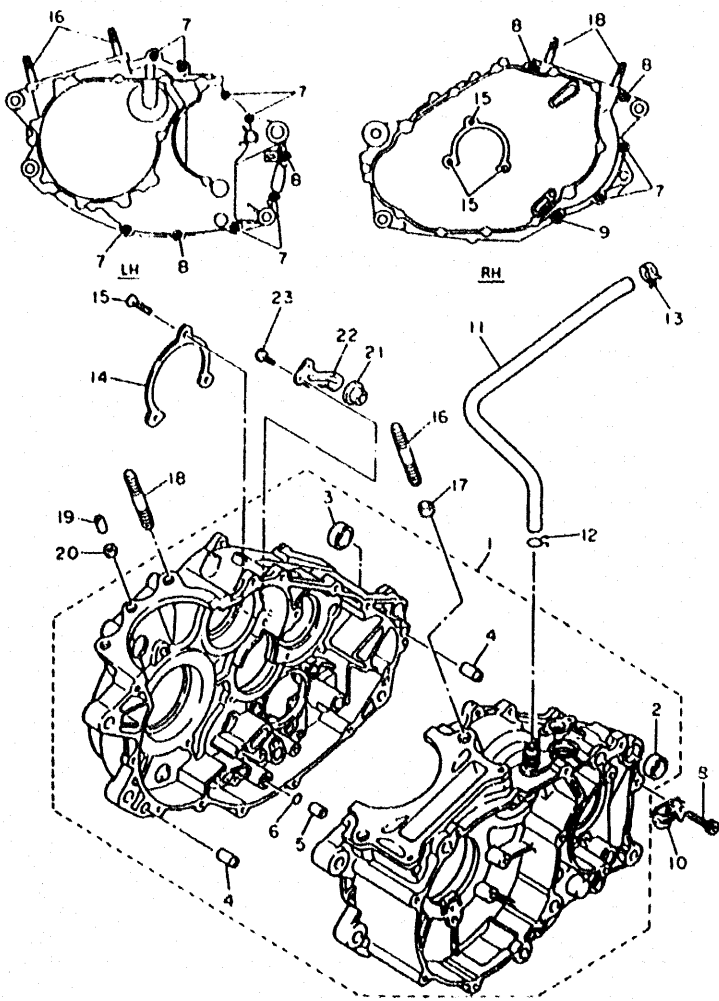


FIG. 10 CRANKCASE

REF. NO.	PART NO.	DESCRIPTION	QTY	REMARKS
1	3DS-15100-00	CRANKCASE ASSY	1	
2	90387-17783	COLLAR	1	
3	90387-16782	COLLAR	1	
4	99510-12016	PIN, dowel	2	
5	99510-08016	PIN, dowel	1	
6	93210-07135	O-RING	1	
7	91317-06030	BOLT, hexagon socket head	2	
8	91317-06045	BOLT	4	
9	91317-06060	BOLT	1	
10	90465-08344	CLAMP	1	
11	4GV-E1166-00	PIPE, breather 1	1	
12	90467-14015	CLIP	1	
13	90467-17128	CLIP	1	
14	5Y1-15383-00	PLATE, bearing cover	1	
15	98707-06012	SCREW, flat head	3	
16	90116-10506	BOLT, stud	2	
17	99510-14016	PIN, dowel	2	
18	90116-10263	BOLT, stud	2	
19	99510-08016	PIN, dowel	1	
20	90430-08178	GASKET	1	
21	3Y6-15167-00	PLUG, blind 1	1	
22	3Y6-15144-00	PLATE, lock	1	
23	97017-06016	BOLT	2	



4GV1351-4100

B 13

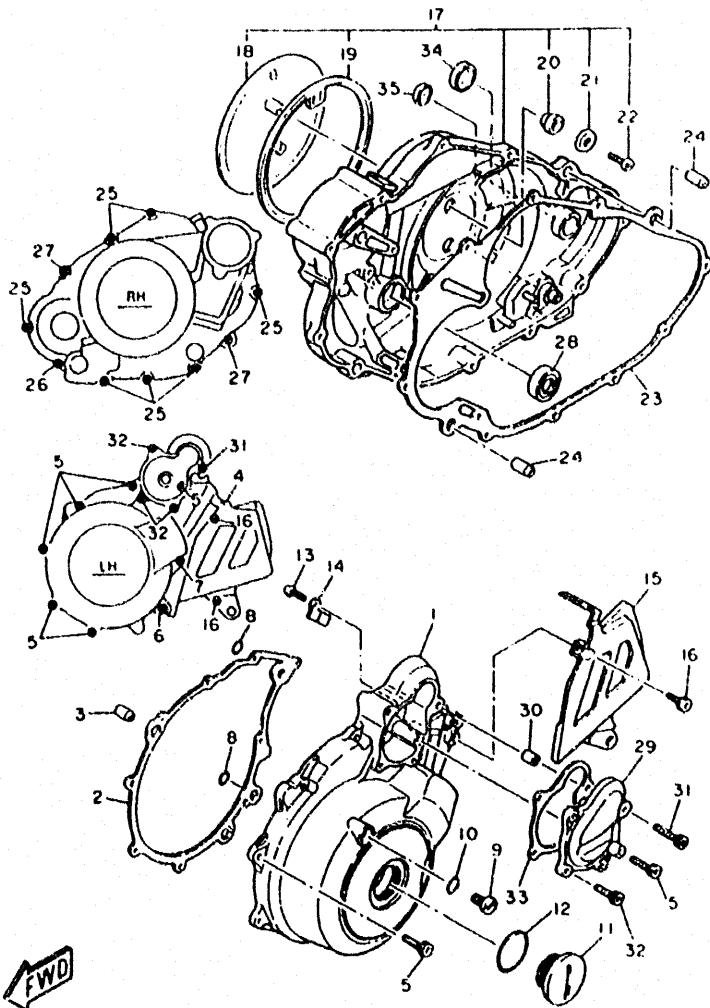
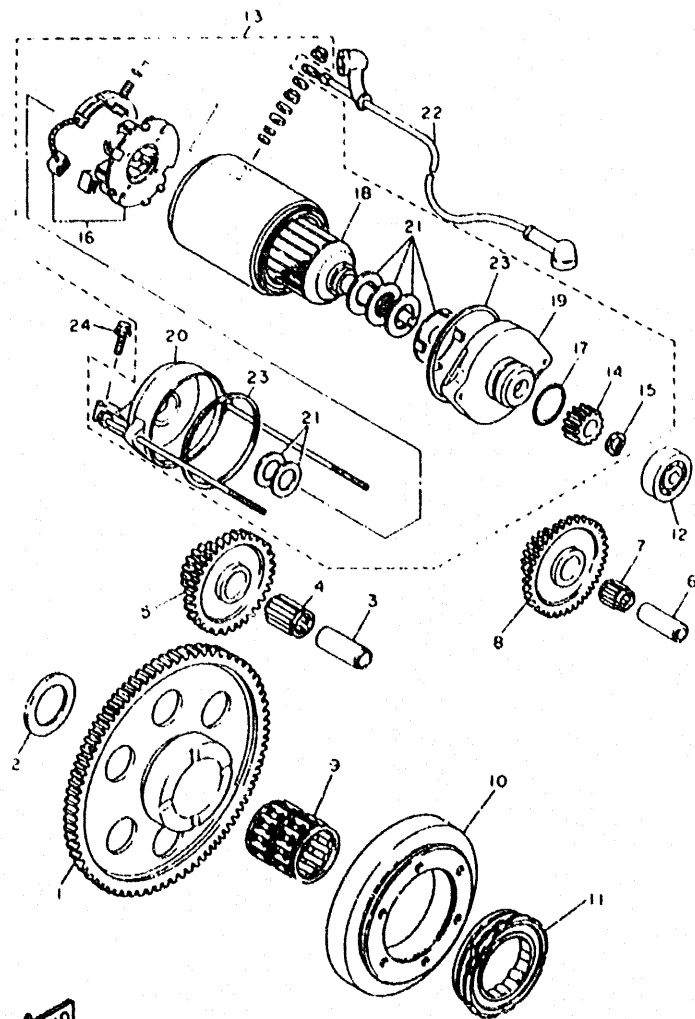


FIG. 11 CRANKCASE COVER 1

REF. NO.	PART NO.	DESCRIPTION	Q.TY	REMARKS
1	3TB-15411-01	COVER, crankcase 1	1	• CIRCUIT SILVER
2	4DW-15451-00	GASKET, crankcase cover 1	1	
3	99510-12016	PIN, dowel	2	
4	91317-06035	BOLT	1	
5	91317-06025	BOLT	6	
6	91317-06050	BOLT	1	
7	91317-06050	BOLT	1	
8	93210-13061	O-RING	2	
9	90340-08M04	PLUG, straight screw	1	
10	90430-08143	GASKET	1	
11	90340-36121	PLUG, straight screw	1	
12	93210-36510	O-RING	1	
13	98507-06012	SCREW, pan head	2	
14	90462-16102	CLAMP	1	
15	3AJ-15421-00	COVER, crankcase. 2	1	
16	9131M-06016	BOLT	2	
17	3DS-15430-00	CRANKCASE COVER ASSY 3	1	
18	2WK-15418-01	COVER, chain case	1	
19	1JK-15449-00	RING, rubber	1	
20	1JK-15486-00	GROMMET	2	
21	90209-05279	WASHER	2	
22	98507-05010	SCREW, pan head	2	
23	4DW-15462-00	GASKET, crankcase cover 3	1	
24	99510-12016	PIN, dowel	2	
25	91317-06025	BOLT	7	
26	91317-06030	BOLT, hexagon socket head	1	
27	91317-06035	BOLT	2	
28	93101-14092	OIL SEAL (S7-14-25-5.5-1-HS)	1	
29	3TB-15415-00	COVER, generator	1	
30	99510-08016	PIN, dowel	1	
31	91317-06035	BOLT	1	
32	91317-06025	BOLT	3	
33	4DW-15455-00	GASKET 1	1	
34	90338-30096	PLUG	1	
35	90338-21100	PLUG	1	



4GV2354-4120

FIG. 12 STARTER

REF. NO.	PART NO.	DESCRIPTION	Q. TY	REMARKS
1	3YF-15515-00	GEAR, 3	1	
2	902J1-303P4	WASHER, plate	1	
3	1VJ-15522-00	SHAFT, 2	1	
4	93310-217R7	BEARING, cylindrical	1	
5	1VJ-15517-00	GEAR, idler 2	1	
6	1VJ-15521-00	SHAFT, 1	1	
7	93310-212R6	BEARING, cylindrical	1	
8	1VJ-15512-00	GEAR, idler 1	1	
9	93310-530C7	BEARING, cylindrical	1	
10	3TB-15590-01	STARTER ONE-WAY ASSY	1	
11	3TB-15594-00	RACE, one-way bearing	1	
12	93306-20006	BEARING (B6200)	1	NTN
13	4GV-81800-00	STARTING MOTOR ASSY	1	
14	1VJ-15511-00	GEAR, starting motor	1	
15	93440-11024	CIRCLIP	1	
16	3AJ-81801-00	BRUSH SET	1	
17	26H-81847-00	O-RING	1	
18	3AJ-81850-00	ARMATURE SET	1	
19	3AJ-81830-00	FRONT BRACKET ASSY	1	
20	3AJ-81820-00	REAR BRACKET ASSY	1	
21	3AJ-61809-00	WASHER KIT	1	
22	4GV-H183G-00	CORD. COMPL.	1	
23	11H-81844-00	GASKET	2	
24	95817-06030	BOIT, flange	2	

CONTENTS

GENERAL SPEC.

ENGINE

Fig. 1	CYLINDER HEAD	1
Fig. 2	CYLINDER	2
Fig. 3	CRANKSHAFT - PISTON	3
Fig. 4	VALVE	4
Fig. 5	CAMSHAFT - CHAIN	5
Fig. 6	OIL PUMP	6
Fig. 7	INTAKE	7
Fig. 8	CARBURETOR	9
Fig. 9	EXHAUST	11
Fig. 10	CRANKCASE	12
Fig. 11	CRANKCASE COVER 1	13
Fig. 12	STARTER	14
Fig. 13	CLUTCH	15
Fig. 14	TRANSMISSION	16
Fig. 15	SHIFT CAM. FORK	17
Fig. 16	SHIFT SHAFT	18

CHASSIS

Fig. 17	FRAME	19
Fig. 18	FENDER	21
Fig. 19	SIDE COVER/OIL TANK	22
Fig. 20	REAR ARM	23
Fig. 21	REAR SUSPENSION	25
Fig. 22	STEERING	26
Fig. 23	FRONT FORK	27
Fig. 24	FUEL TANK	29
Fig. 25	SEAT	30
Fig. 26	FRONT WHEEL	31
Fig. 27	FRONT BRAKE CALIPER	32
Fig. 28	REAR WHEEL	33
Fig. 29	REAR BRAKE CALIPER	34
Fig. 30	STEERING HANDLE, CABLE	35
Fig. 31	FRONT MASTER CYLINDER	36
Fig. 32	STAND FOOTREST	37
Fig. 33	REAR MASTER CYLINDER	38
Fig. 34	EMBLEMS	39
Fig. 35	GENERATOR	40
Fig. 36	FLASHER LIGHT	41
Fig. 37	METER	42
Fig. 38	HEADLIGHT	43
Fig. 39	TAILLIGHT	44
Fig. 40	HANDLE SWITCH, LEVER	45
Fig. 41	ELECTRICAL 1	46
Fig. 42	ELECTRICAL 2	47

INDEX (GENERAL SPEC.)

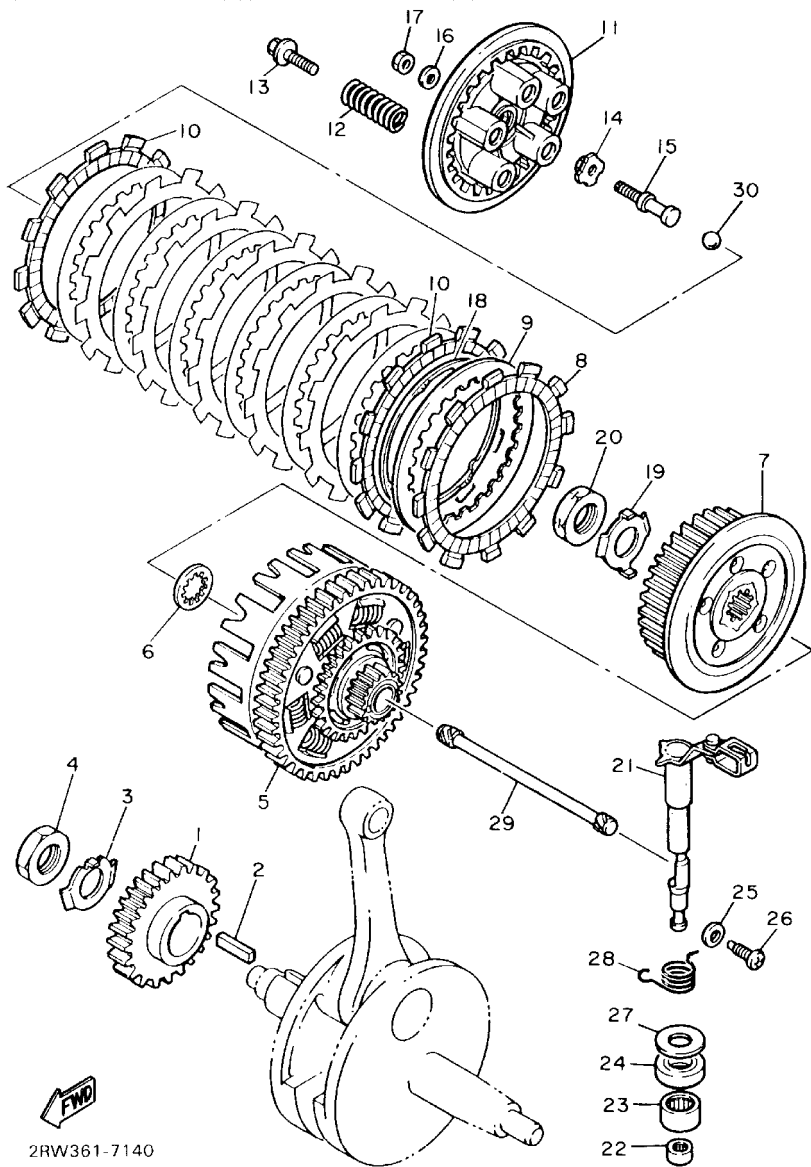
NUMERICAL INDEX

INDIVIDUAL SPEC.

Fig. 43	FRAME	48
Fig. 44	FENDER	49
Fig. 45	STAND/FOOTREST	50
Fig. 46	FLASHER LIGHT	51
Fig. 47	ELECTRICAL 1	52

INDEX (INDIVIDUAL SPEC.)

NUMERICAL INDEX



2RW361-7140

FIG. 13 CLUTCH

REF. NO.	PART NO.	DESCRIPTION	Q.TY	REMARKS
1	3AJ-16111-00	GEAR, primary drive (34T)	1	
2	90282-07042	KEY, straight	1	
3	90215-20197	WASHER, lock	1	
4	90170-20274	NUT	1	
5	3AJ-16150-00	PRIMARY DRIVEN GEAR COMP. (71T)	1	
6	2JN-16154-00	PLATE, thrust 1	1	
7	2JN-16371-00	BOSS, clutch	1	
8	5Y1-16321-00	PLATE, friction	6	
9	360-16325-00	PLATE, clutch 2	7	
10	5Y1-16331-01	PLATE, friction 2	2	
11	5Y1-16351-00	PLATE, pressure 1	1	
12	90501-23142	SPRING, compression	5	
13	90159-06016	SCREW, with washer	5	
14	1W1-16358-01	PLATE, push	1	
15	34K-16356-00	ROD, push 1	1	
16	92907-06200	WASHER, plain	1	
17	95317-06600	NUT	1	
18	5Y1-16383-00	SPRING, clutch boss	1	
19	90215-20231	WASHER, lock	1	
20	90170-20327	NUT	1	
21	4GV-16380-10	PUSH LEVER ASSY	1	
22	93317-11020	BEARING, cylindrical	1	
23	93315-11720	BEARING, cylindrical	1	
24	93102-17357	OIL SEAL	1	
25	90201-08087	WASHER, plate	1	
26	90149-08067	SCREW	1	
27	90201-17327	WASHER, plate	1	
28	90508-14710	SPRING, torsion	1	
29	5Y1-16357-00	ROD, push 2	1	
30	93515-32029	BALL	1	

C2

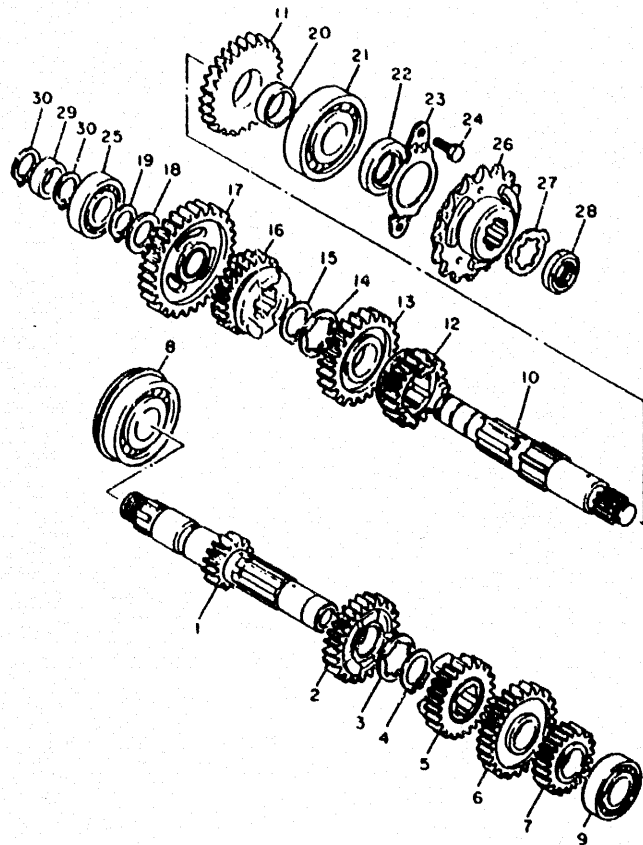


FIG. 14 TRANSMISSION

REF. NO.	PART NO.	DESCRIPTION	Q.TY	REMARKS
1	2RW-17411-00	AXLE, main (12T)	1	
2	34K-17141-00	GEAR, 4th pinion (22T)	1	
3	90209-22191	WASHER	1	
4	93440-25084	CIRCLIP	1	
5	1VJ-17131-00	GEAR, 3rd pinion (20T)	1	
6	2JT-17151-01	GEAR, 5th pinion (24T)	1	
7	34K-17121-01	GEAR, 2nd pinion (17T)	1	
8	93306-30540	BEARING (6305NRX1C3)	1	
9	93306-00431	BEARING	1	
10	2RW-17402-00	DRIVE AXLE ASSY	1	
11	2JT-17221-00	GEAR, 2nd wheel (27T)	1	
12	2JT-17251-00	GEAR, 5th wheel (19T)	1	
13	1VJ-17231-00	GEAR, 3rd wheel (24T)	1	
14	90209-22191	WASHER	1	
15	93440-25084	CIRCLIP	1	
16	3AJ-17241-00	GEAR, 4th wheel (21T)	1	
17	3AJ-17211-00	GEAR, 1st wheel (31T)	1	
18	90201-20276	WASHER, plate (1.0T)	1	
19	99009-20400	CIRCLIP	1	
20	90560-25283	SPACER	1	
21	93306-30535	BEARING	1	
22	93102-25226	OIL SEAL	1	
23	5Y1-17471-00	PLATE, cover	1	
24	97027-06014	BOLT	2	
25	93306-00426	BEARING	1	
26	99999-01798	SPROCKET, drive (15T)	1	
27	90215-23265	WASHER, lock	1	
28	90179-18552	NUT	1	
29	90560-20199	SPACER	1	
30	99009-20400	CIRCLIP	2	

FWD

3AJ1351 814J

C3

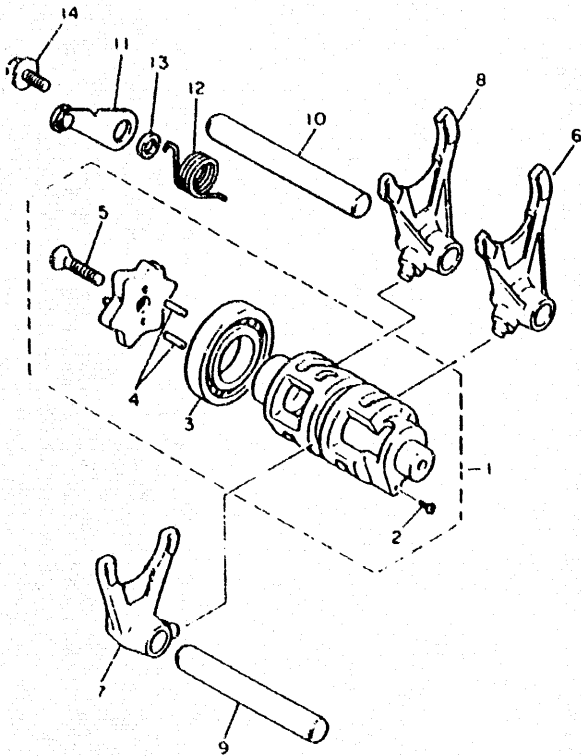


FIG. 15 SHIFT CAM.FORK

REF. NO.	PART NO.	DESCRIPTION	Q.TY	REMARKS
1	3YF-18540-00	SHIFT CAM ASSY	1	
2	136-18542-00	POINT, neutral	1	
3	93316-00501	BEARING, cylindrical	1	
4	93604-10011	PIN, dowel	2	
5	90151-06017	SCREW, countersunk	1	
6	4PT-18511-00	FORK, shift 1	1	
7	4PT-18512-00	FORK, shift 2	1	
8	4PT-18513-00	FORK, shift 3	1	
9	3YF-18531-00	BAR, shift fork guide 1	1	
10	3XV-18535-00	BAR, shift fork guide 2	1	
11	2KF-18140-00	STOPPER LEVER ASSY	1	
12	90508-26691	SPRING, torsion	1	
13	90387-063F7	COLLAR	1	
14	90159-06078	SCREW, with washer	1	



2KF300-7150

C4

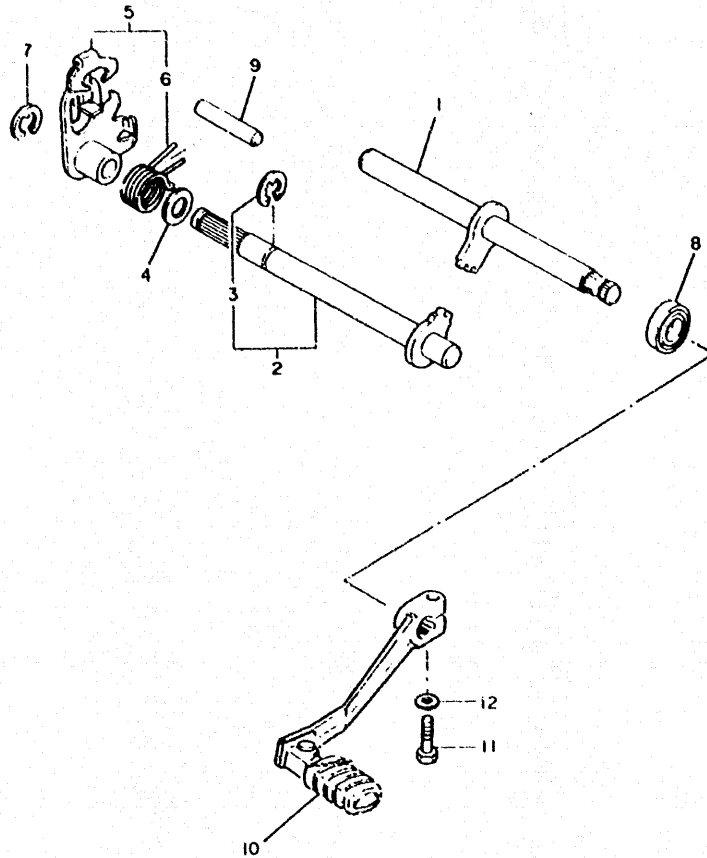


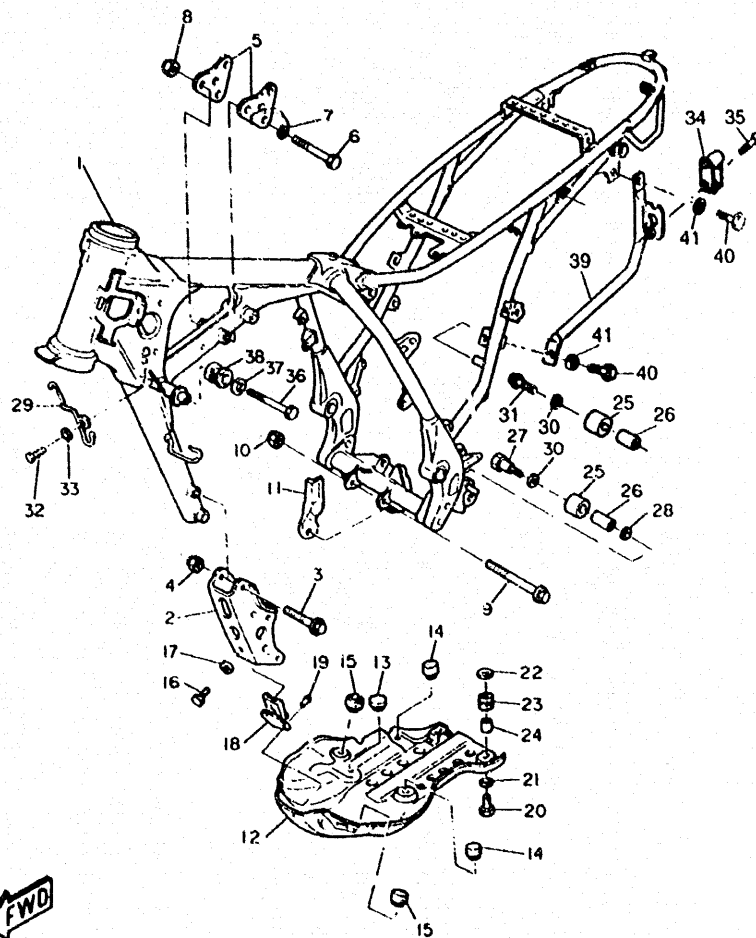
FIG. 16 SHIFT SHAFT

REF. NO.	PART NO.	DESCRIPTION	Q.TY	REMARKS
1	43F-18102-02	SHIFT SHAFT ASSY 2	1	
2	5Y1-18101-02	SHIFT SHAFT ASSY	1	
3	99U06-10600	CIRCLIP	1	
4	90201-12474	WASHER, plate	1	
5	34K-18120-00	SHIFT LEVER ASSY	1	
6	90508-29629	SPRING, torsion	1	
7	99001-09600	CIRCLIP	1	
8	93102-12321	SEAL	1	
9	93608-33046	PIN, dowel	1	
10	4GV-E8110-02	SHIFT PEDAL ASSY	1	*
11	9701M-06025	BOLT	1	*
12	9290M-06600	WASHER, plain	1	*



4GV1354-3160

C5



4GV2354-4170

FIG. 17 FRAME

REF. NO.	PART NO.	DESCRIPTION	Q.TY	REMARKS
1	4GV-F1110-10-UJ	FRAME COMPL.	1	• RADICAL WHITE
2	4GV-F1316-00-UJ	STAY, E/G 3	1	• RADICAL WHITE
3	90105-10286	BOLT, washer based	4	•
4	90185-10060	NUT, self-lock	4	
5	4GV-F1315-00	STAY, E/G 2	2	•
6	97017-10080	BOLT	3	
7	92907-10100	WASHER, spring	3	
8	90185-10060	NUT, self lock.	3	
9	95817-10110	BOLT, FLG.	1	
10	90185-10060	NUT, self lock.	1	
11	4GV-F176E-00	PLATE	1	•
12	4GV-F1471-00	PROTECTOR, E/G	1	•
13	2J5-21732-00	SEAL 1	1	
14	4N0-27114-00	STOPPER, main stand	2	
15	34L-21485-00	DAMPER, rubber	2	
16	97017-08016	BOLT	1	
17	92907-08100	WASHER, spring	1	
18	34L-21486-00	DAMPER.2	1	
19	90267-48079	RIVET, blind	2	
20	97007-06020	BOLT	2	
21	92907-06100	WASHER, spring	2	
22	90201-06765	WASHER, plate	2	•
23	90480-14229	GROMMET	2	
24	90367-060A7	COLLAR	2	
25	30X-22178-00	TENSIONER	2	
26	4V4-22184-00	BUSH	2	
27	90109-08705	BOLT	1	
28	90201-13202	WASHER, plate	1	
29	4GV-F1161-00	HOLDER, wire	1	•
30	9J201-08753	WASHER, plate	2	
31	95807-08016	BOLT, flange	1	
32	9131M-06012	BOLT, hex. socket head	1	•
33	9290M-06600	WASHER, plain	1	•
34	9JH0-21308-01	HELMET, hanger	1	
35	90151-06025	SCREW, cross recessed	1	

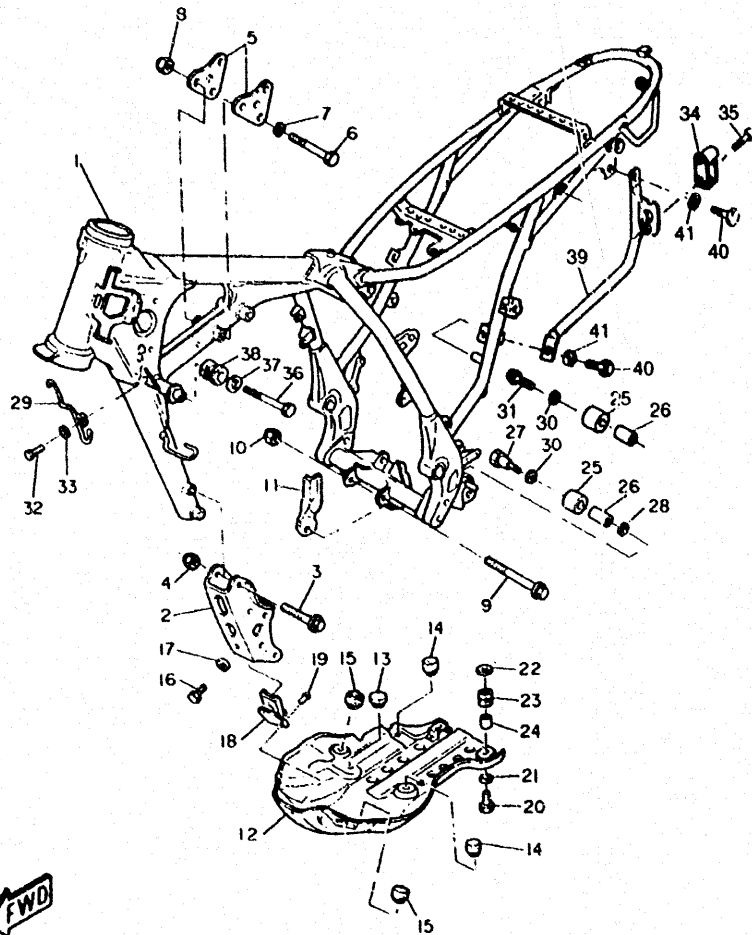


FIG. 17 FRAME

REF. NO.	PART NO.	DESCRIPTION	Q.TY	REMARKS
36	9701L-08020	BOLT, hex.	2	*
37	90201-098E7	WASHER, plain	2	*
38	3SH-F4181-00	GROMMET	2	*
39	4GV-F1105-00-UJ	BRKT.	1	* UR
40	9701L-08016	BOLT, hex.	2	*
41	9290L-08100	WASHER, spring	2	*



4GV2354-1170

C7

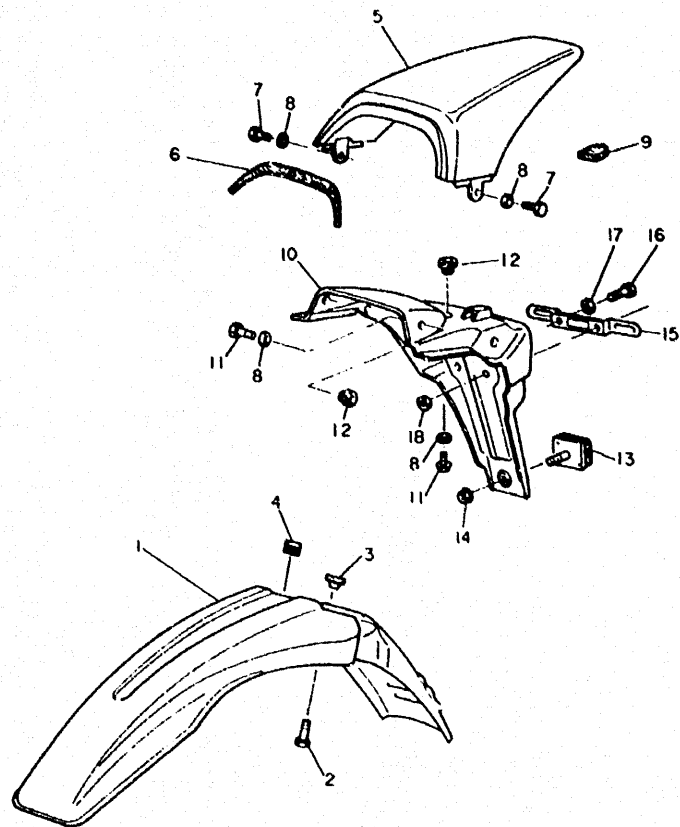


FIG. 18 FENDER

REF. NO.	PART NO.	DESCRIPTION	Q.TY	REMARKS
1	■ 4GV-F1511-00	FR. FENDER	1	• UR PURPLISH WHITE SOLID 1
2	90119-06097	BOLT, hex. w/washer	4	
3	90387-062V8	COLLAR	4	
4	90480-12845	GROMMET	1	•
5	■ 4GV-F1611-00	RR. FENDER	1	• UR PURPLISH WHITE SOLID 1
6	4GV-F1639-00	DAMPER	1	•
7	9701L-06014	BOLT, hex.	2	•
8	9290L-06200	WASHER, plain	4	•
9	90480-16185	GROMMET	1	
10	4GV-F1685-00	BRKT., licence	1	•
11	9701L-06016	BOLT, hex.	4	•
12	90387-062M9	COLLAR	4	•
13	4GV-H5130-00	RR. REFLECT. ASSY	1	•
14	90185-06830	NUT, fig.	1	•
15	3SH-H4551-00	BRKT., licence	1	•
16	9701M-06014	BOLT, hex.	2	•
17	9290M-06600	WASHER, plain	2	•
18	9571L-06300	NUT, nylon	2	•

NOTE: ■ COLORED-ROUGH MATERIAL



4GV1354-3180

C 8

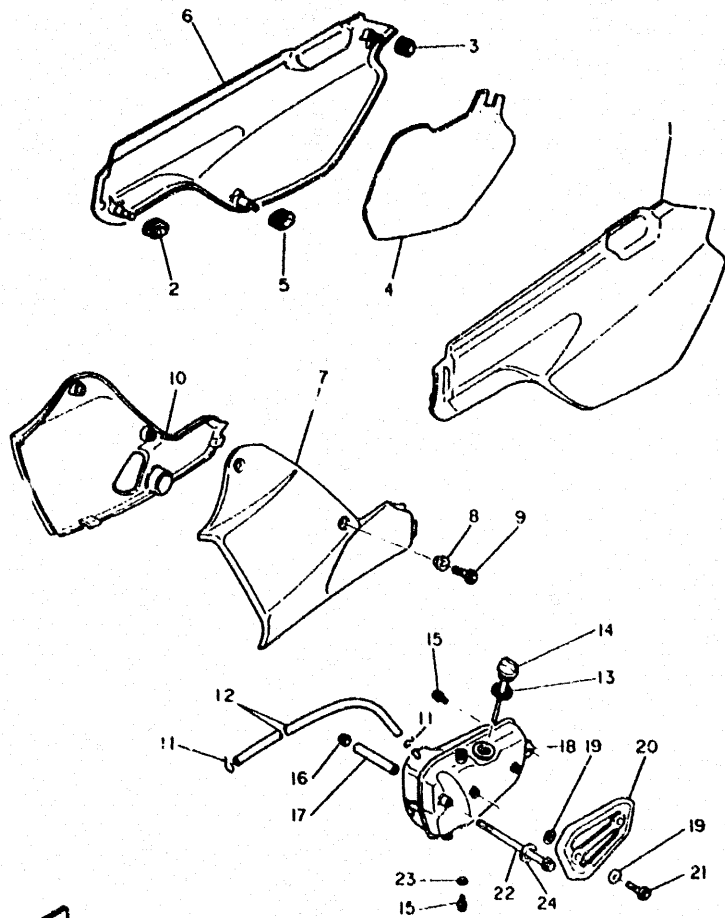


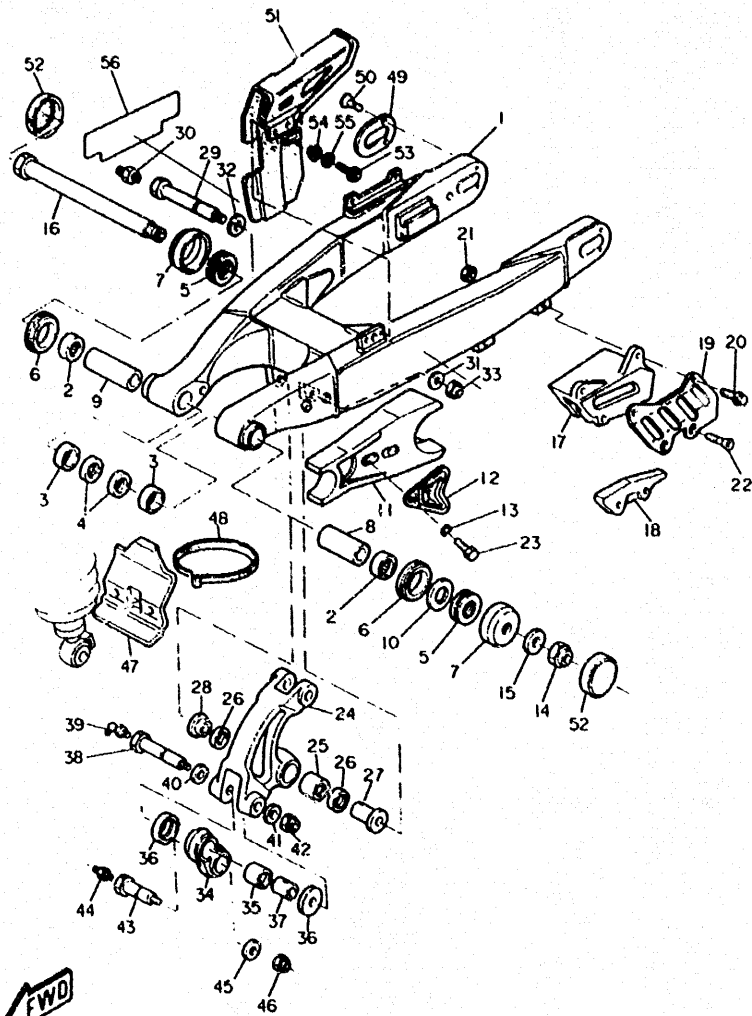
FIG. 19 SIDE COVER / OIL TANK

REF. NO.	PART NO.	DESCRIPTION	Q.TY	REMARKS
1	■ 4GV-F1711-00	COVER, side 1 LH.	1	• UR PURPLISH WHITE SOLID 1
2	90480-17850	GROMMET	2	•
3	90480-13398	GROMMET	2	•
4	4GV-F174A-00	INSULATOR	1	•
5	90480-17850	GROMMET	1	•
6	■ 4GV-F1721-00	COVER, side 2 RH.	1	• UR PURPLISH WHITE SOLID 1
7	4GV-F1731-00-PO	COVER, side 3 LH.	1	• UR VIVID RED SOLID A
8	90387-06869	COLLAR	4	•
9	90111-06806	BOLT, hex. socket head	4	•
10	4GV-F1741-00-PO	COVER side, 4 RH.	1	• UR VIVID RED SOLID A
11	90467-10C08	CLIP	2	•
12	90445-11748	HOSE	1	•
13	90430-27124	GASKET	1	•
14	34K-21771-00	BODY, cap	1	•
15	9581L-08012	BOLT, flg.	2	•
16	9570L-08500	NUT, flg.	1	•
17	90387-038H0	COLLAR	1	•
18	4GV-F1751-01-98	TANK, oil	1	• UR LOW GLOSS BLACK
19	90202-05187	WASHER	2	•
20	4GV-F175N-00	COVER	1	•
21	9850M-06010	SCREW, pan head (+)	2	•
22	90101-08859	BOLT	1	•
23	90201-08087	WASHER, plain	1	•
24	9290M-08200	WASHER, plain	1	•

NOTE: ■ COLORED-ROUGH MATERIAL



4GV1354-3190



4GV4300-6201

FIG. 20 REAR ARM

REF. NO.	PART NO.	DESCRIPTION	Q.TY	REMARKS
1	4GV-F2110-01	RR. ARM COMPL.	1	•
2	93317-32231	BEARING, cylindrical	2	
3	90380-22111	BUSH, solid	2	
4	93106-22019	OIL SEAL (DC 22-28-8)	2	
5	93342-22208	BEARING	2	
6	93108-35004	OIL SEAL (35-41-8)	2	
7	3R4-22129-00	COVER, thrust 2	2	
8	1VJ-22123-00	BUSH, solid	1	
9	90380-16127	BUSH, solid	1	
10	156-22127-00	SHIM (0.3T)	2	UN
11	4GV-F2151-00	SEAL, guard	1	•
12	4GV-F2156-00	WASHER, plate	1	•
13	9290L-06100	WASHER, spring	2	
14	90185-14070	NUT, self locking	1	
15	90201-15238	WASHER, plate	1	
16	1VJ-22141-00	SHAFT, pivot	1	
17	3XP-22199-03	SUPPORT, chain	1	
18	3JD-22147-00	PROTECTOR, chain	1	
19	3JD-22128-00	COVER, trust 1	1	
20	90105-06601	BOLT, washer based	2	
21	9570L-06500	NUT, flg.	2	•
22	90151-06805	SCREW, cross recessed countersunk	2	•
23	95024-06020	BOLT	2	
24	4GV-F217A-00	ARM, relay	1	•
25	93317-32034	BEARING, cylindrical	1	
26	93109-20029	OIL SEAL	2	
27	90387-147G6	COLLAR	1	
28	90387-147G7	COLLAR	1	
29	90109-12701	BOLT	1	
30	93700-06M03	NIPPLE, grease	1	
31	90201-120A5	WASHER, plate	1	
32	90201-142M6	WASHER, plate	1	
33	90185-12119	NUT, self lock.	1	
34	23X-2217F-00	ROD, connecting.1	1	
35	93315-31732	BEARING, cylindrical	2	

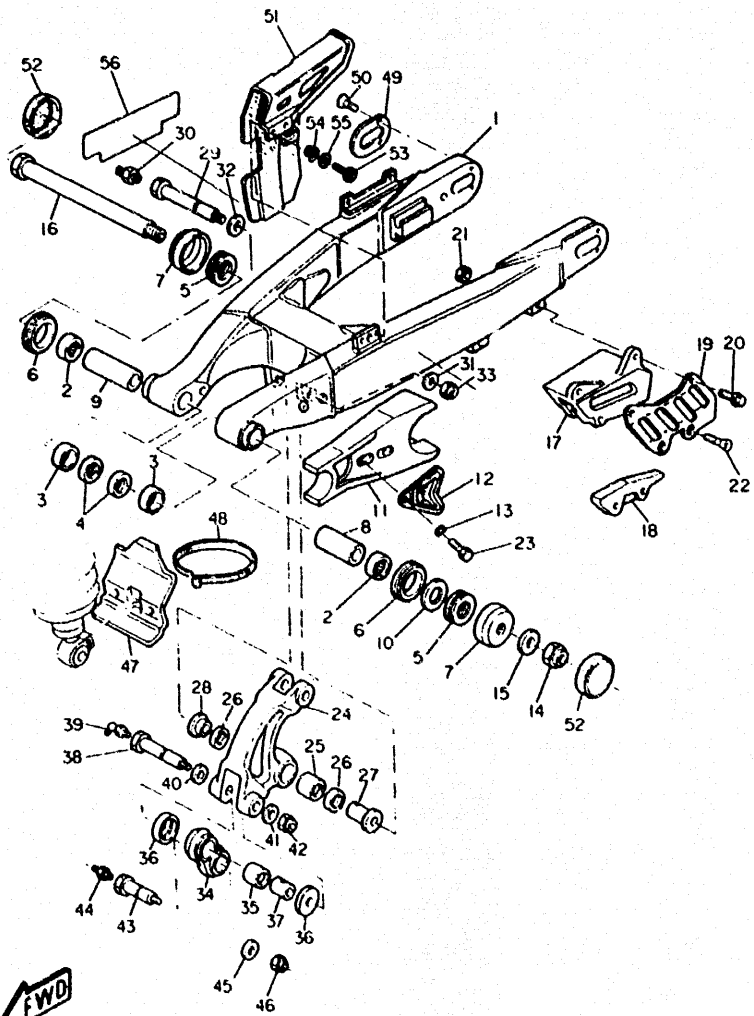


FIG. 20 REAR ARM

REF. NO.	PART NO.	DESCRIPTION	Q.TY	REMARKS
36	55K-22129-00	COVER, trust 2	4	
37	90387-121H1	COLLAR	2	
38	90109-10702	BOLT	1	
39	93700-06005	NIPPLE, grease	1	
40	90201-120E6	WASHER, plate	1	
41	90201-10M05	WASHER, plate	1	
42	90185-10120	NUT, self locking	1	
43	90109-10703	BOLT	1	
44	93700-06009	NIPPLE, grease	1	
45	90201-100F7	WASHER, plate	1	
46	95617-10100	NUT, U	1	
47	4GV-F1629-00	GUARD, mud	1	
48	2AJ-F3192-50	CLAMP	1	
49	3XJ-22355-00	PATCH A	1	
50	90151-04048	SCREW, counter sunk	2	
51	4GV-F2311-00	CASE, case	1	
52	3LD-2219X-01	COVER	2	
53	9701M-06016	BOLT, hex.	2	
54	90387-062M9	COLLAR	2	
55	9290M-06100	WASHER, spring	2	

4GV4300-6201

C 11

24

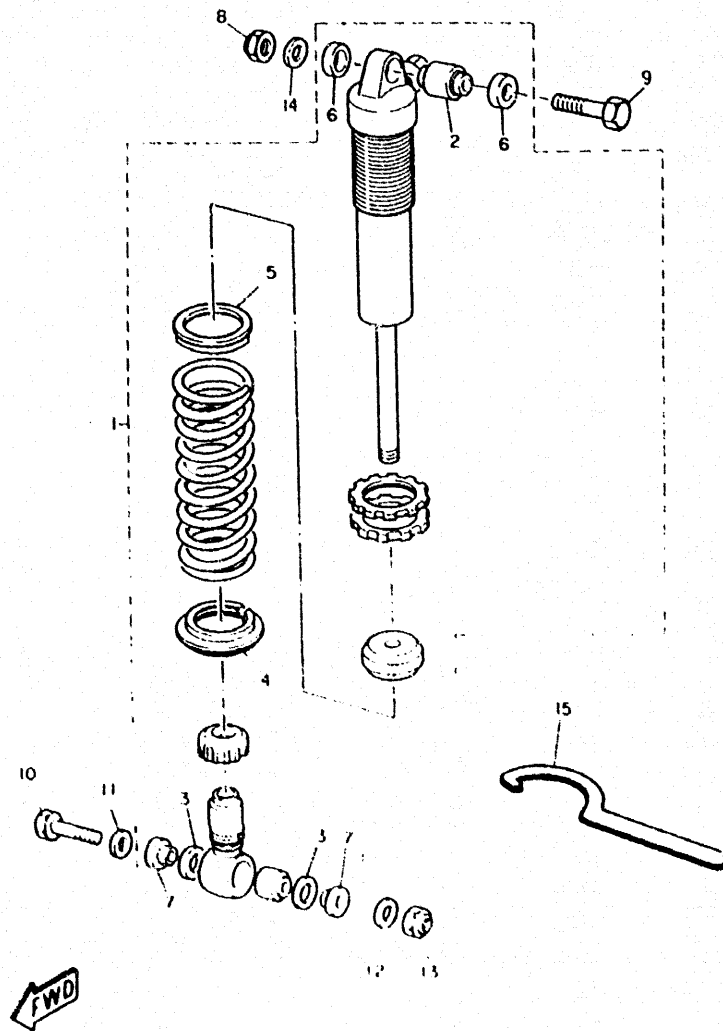


FIG. 21 REAR SUSPENSION

REF. NO.	PART NO.	DESCRIPTION	Q.TY	REMARKS
1	4GV-F2210-10-J5	RR. SHOCK ABSORBER ASSY	1	• UR SPACE BLU
2	4GV-F2216-00	• BUSH	1	•
3	4GV-F2217-10	• JAMPER	2	•
4	4GV-F2214-10	• GUIDE, spring 1	1	•
5	4GV-F2223-10	• SEAT, spring	1	•
6	4GV-F2221-10	• COVER	2	•
7	4GV-F2253-10	• COLLAR	2	•
8	90185-10120	NUT, self lock.	1	
9	90109-10690	BOLT	1	
10	90105-10700	BOLT	1	
11	90201-120E6	WASHER, plate	1	•
12	90201-10M05	WASHER, plain	1	•
13	90185-10120	NUT, self lock.	1	
14	90201-10430	WASHER, plain	1	
15	4GV-F8135-00	SPANNER, SPECIAL	1	•

FWD

C 12

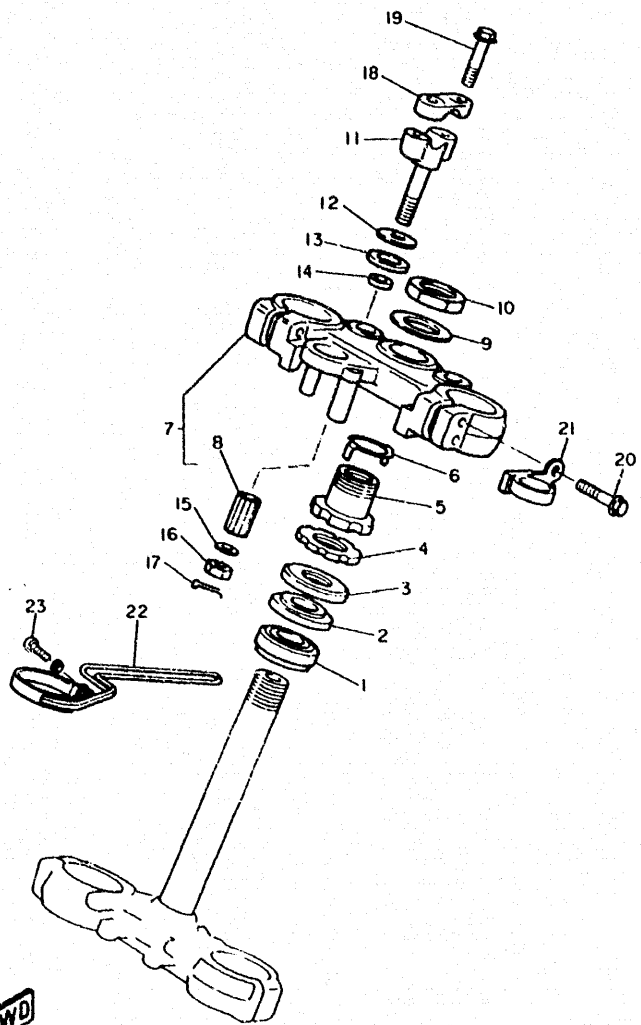
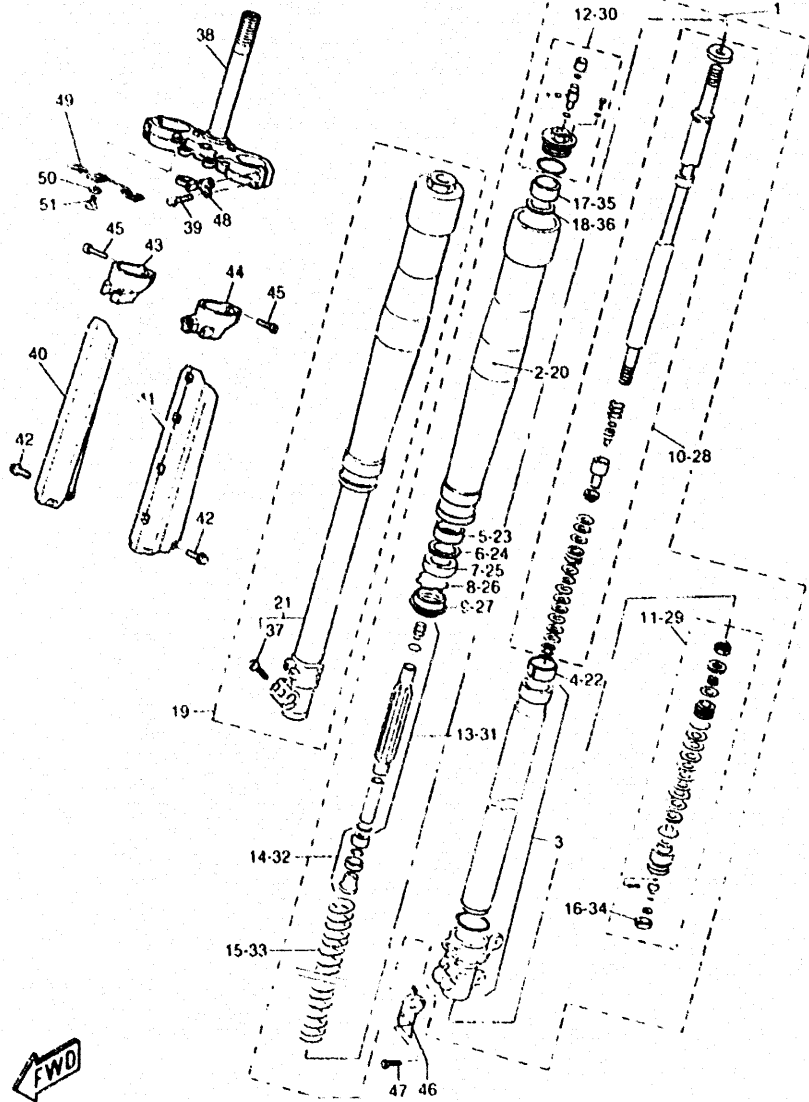


FIG. 22 STEERING

REF. NO.	PART NO.	DESCRIPTION	Q.TY	REMARKS
1	93332-00067	BEARING	1	•
2	93332-00068	BEARING	1	•
3	2HG-23416-00	COVER, ball race 2	1	
4	90179-28602	NUT	1	•
5	90179-28603	NUT	1	•
6	3SP-23418-00	WASHER, special	1	
7	4GV-WF341-00	CROWN, handle assy	1	•
8	307-22123-00	BUSH, 1	2	
9	90201-365M5	WASHER, plate	1	
10	90170-36394	NUT	1	•
11	4AA-23442-01-T9	HOLDER, handle under	2	COMPETITION SILVER
12	90201-123E8	WASHER, plate	2	•
13	90202-14077	WASHER, plate	2	•
14	90387-121E8	COLLAR	2	
15	90201-100A1	WASHER, plate	2	•
16	90185-10037	NUT, self lock.	2	•
17	91490-20020	PIN, cotter	2	
18	3SP-23441-00	HOLDER, handler upper	2	
19	95027-08035	BOLT	4	
20	95027-08035	BOLT	4	
21	3R4-23317-00	HOLDER, cable	1	
22	3XP-23318-00	HOLDER, cable	1	
23	9850L-05016	SCREW, pan head	1	

4GV1354-4221



4GV2354-4230

FIG. 23 FRONT FORK

REF. NO.	PART NO.	DESCRIPTION	Q.TY	REMARKS
1	4GV-F3102-10	FR. FORK ASSY (LH)	1	*
2	4GV-F3136-10	TUBE, outer 2	1	*
3	4GV-F3120-10	INNER, tube comp 2	1	*
4	3XJ-23171-L0	PISTON, front fork	1	*
5	3XJ-23125-L0	METAL, slide 1	1	*
6	4GV-F3146-00	WASHER, oil seal	1	*
7	4DA-23145-L0	OIL SEAL	1	*
8	4GV-F3153-00	RING, snap	1	*
9	4DA-23144-L0	SEAL, dust.	1	*
10	4GV-F3170-00	CYLINDER COMP., front fork	1	*
11	4GV-F316A-00	VALVE COMP.	1	*
12	4GV-F3111-00	BOLT, cap	1	*
13	4GV-F3142-00	SEAT, SPRING UPPER	1	*
14	4GV-F319K-00	PLUNGER, set	1	*
15	4GV-F3141-00	SPRG., front fork (K=0.390)	1	*
16	4GV-F312G-00	PLUG	1	*
17	4GV-F3364-00	COLLAR, 2	1	*
18	4GV-F3143-00	SEAT, spring lower	1	*
19	4GV-F3103-10	FRONT FORK ASSY (RH.)	1	*
20	4GV-F3136-10	TUBE, outer (RH)	1	*
21	9131L-08025	INNER TUBE COMP. 1	1	*
22	3XJ-23171-L0	PISTON, front fork	1	*
23	3XJ-23125-L0	METAL, slide 1	1	*
24	4GV-F3146-00	WASHER, oil seal	1	*
25	4DA-23145-L0	OIL SEAL	1	*
26	4GV-F3153-00	RING, snap	1	*
27	4DA-23144-L0	SEAL, dust.	1	*
28	4GV-F3170-00	CYLINDER COMP., front fork	1	*
29	4GV-F316A-00	VALVE COMP.	1	*
30	4GV-F3111-00	BOLT, cap	1	*
31	4GV-F3142-00	SEAT, spring upper	1	*
32	4GV-F319K-00	PLUNGER SET	1	*
33	4GV-F3141-00	SPRING, front fork (K=0.390)	1	*
34	4GV-F312G-00	PLUG	1	*
35	4GV-F3364-00	COLLAR, 2	1	*

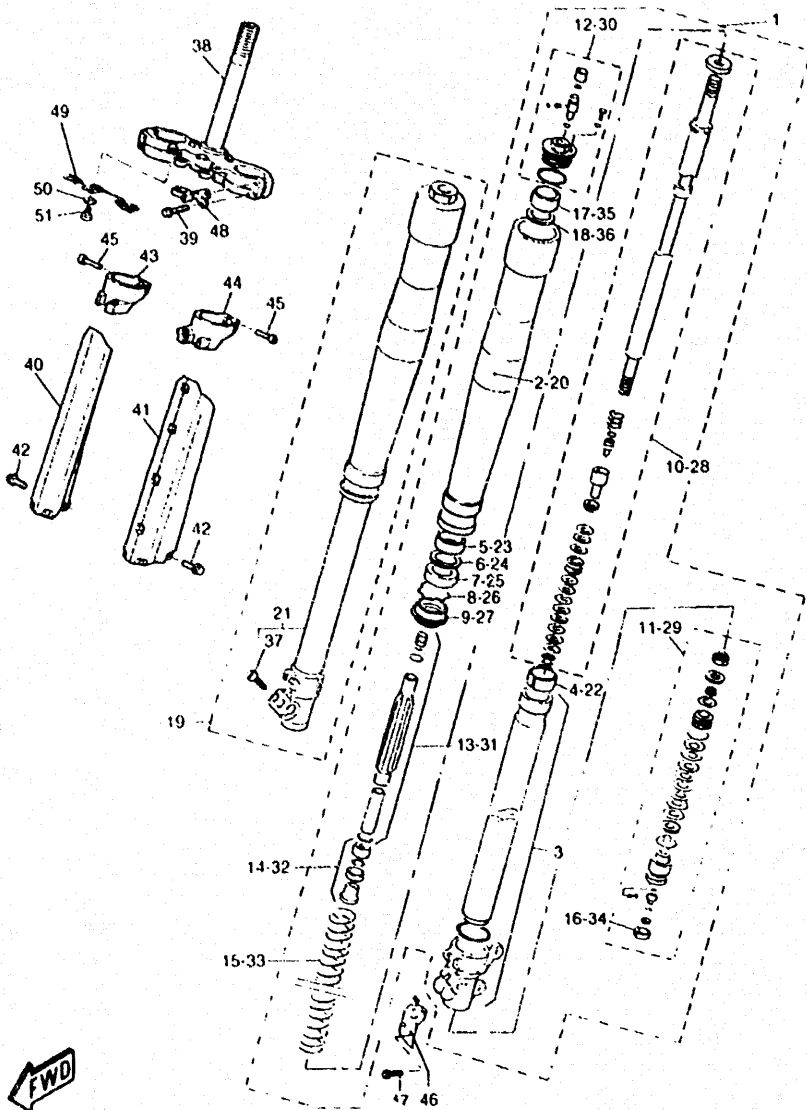


FIG. 23 FRONT FORK

REF. NO.	PART NO.	DESCRIPTION	Q. TY	REMARKS
36	4GV-F3143-00	SEAT, spring lower	1	*
37	91311-08025	BOLT, hex socket head	2	*
38	4GV-F3340-00	UNDER BRKT. COMP.	1	*
39	9502L-08040	BOLT	4	*
40	4GV-F314J-00	PROTECTOR COMP. 2	1	* UR PURPLISH WHITE SOLID 1
41	4GV-F314H-00	PROTECTOR COMP. 1	1	* UR PURPLISH WHITE SOLID 1
42	3SP-23356-LO	BOLT, 2	6	
43	4DA-2314G-LO	PROTECTOR GUIDE COMP. 2	1	
44	4DA-2314F-LO	PROTECTOR GUIDE COMP. 1	1	
45	4GV-F3194-00	SCREW, boot band	4	*
46	4EW-2314E-LO	COVER, hose	1	
47	4DA-23346-LO	BOLT, 1	4	
48	3R4-23389-00	GUIDE, cable	1	
49	4GV-F317M-00	STAY, 3	1	*
50	9290L-06690	WASHER, plain	2	*
51	9131L-06014	BOLT, hex socket head	2	*



4GV2354-4230

CONTENTS

GENERAL SPEC.

ENGINE

Fig. 1	CYLINDER HEAD	1
Fig. 2	CYLINDER	2
Fig. 3	CRANKSHAFT - PISTON	3
Fig. 4	VALVE	4
Fig. 5	CAMSHAFT - CHAIN	5
Fig. 6	OIL PUMP	6
Fig. 7	INTAKE	7
Fig. 8	CARBURETOR	9
Fig. 9	EXHAUST	11
Fig. 10	CRANKCASE	12
Fig. 11	CRANKCASE COVER 1	13
Fig. 12	STARTER	14
Fig. 13	CLUTCH	15
Fig. 14	TRANSMISSION	16
Fig. 15	SHIFT CAM FORK	17
Fig. 16	SHIFT SHAFT	18

CHASSIS

Fig. 17	FRAME	19
Fig. 18	FENDER	21
Fig. 19	SIDE COVER/OIL TANK	22
Fig. 20	REAR ARM	23
Fig. 21	REAR SUSPENSION	25
Fig. 22	STEERING	26
Fig. 23	FRONT FORK	27
Fig. 24	FUEL TANK	29
Fig. 25	SEAT	30
Fig. 26	FRONT WHEEL	31
Fig. 27	FRONT BRAKE CALIPER	32
Fig. 28	REAR WHEEL	33
Fig. 29	REAR BRAKE CALIPER	34
Fig. 30	STEERING HANDLE, CABLE	35
Fig. 31	FRONT MASTER CYLINDER	36
Fig. 32	STAND/FOOTREST	37
Fig. 33	REAR MASTER CYLINDER	38
Fig. 34	EMBLEMS	39
Fig. 35	GENERATOR	40
Fig. 36	FLASHER LIGHT	41
Fig. 37	METER	42
Fig. 38	HEADLIGHT	43
Fig. 39	TAILLIGHT	44
Fig. 40	HANDLE SWITCH, LEVER	45
Fig. 41	ELECTRICAL 1	46
Fig. 42	ELECTRICAL 2	47

INDEX (GENERAL SPEC.)

NUMERICAL INDEX

INDIVIDUAL SPEC.

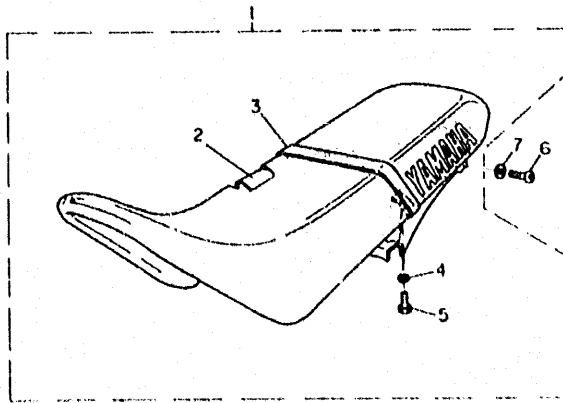
Fig. 43	FRAME	48
Fig. 44	FENDER	49
Fig. 45	STAND/FOOTREST	50
Fig. 46	FLASHER LIGHT	51
Fig. 47	ELECTRICAL 1	52

INDEX (INDIVIDUAL SPEC.)

NUMERICAL INDEX

FIG. 25 SEAT

REF. NO.	PART NO.	DESCRIPTION	Q.TY	REMARKS
1	4GV-F4770-30	SEMI-DOUBLE SEAT ASSY	1	• UR. VIVID RED SOLID A BLACK
2	4GV-F4731-30	COVER SEAT	1	• UR. VIVID RED SOLID A BLACK
3	4GV-F4734-30	BAND	1	• UR. VIVID RED SOLID A
4	9290L-06600	WASHER, plain	2	•
5	9701L-06016	BOLT, hex.	2	•
6	9131L-06016	BOLT, hex. socket head	2	•
7	9290L-06200	WASHER, plain	2	•



4GV1354-3250

D3

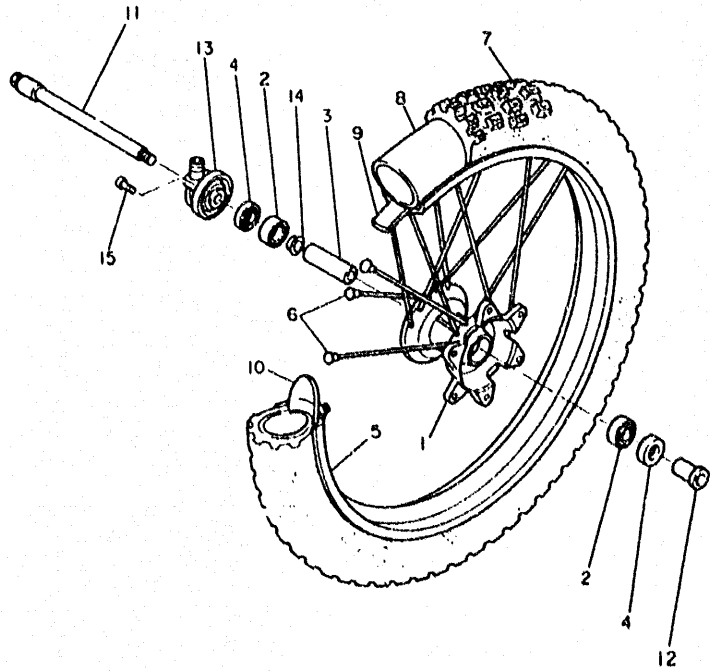


FIG. 26 FRONT WHEEL

REF. NO.	PART NO.	DESCRIPTION	Q.TY	REMARKS
1	4GV-25111-00	HUB, front	1	
2	93306-00316	BEARING	2	
3	90560-17379	SPACER	1	
4	93106-22032	OIL SEAL	2	
5	94418-218A4	RIM (1,85-21)	1	*
6	4GV-F5104-00	SPOKE SET, front	1	*
7	94109-218K3	TIRE (90/90-21') MI70	1	* PIRELLI
8	94209-21892	TUBE (MA 3.00-21)	1	* PIRELLI
9	94309-21853	BAND, rim (3.00-21')	1	*
10	4GV-F5394-00	SPACER, bead	1	*
11	4GV-F5181-00	AXLE, wheel	1	*
12	90387-173Y0	COLLAR	1	*
13	4GV-25190-00	GEAR, unit assy	1	
14	146-25116-00	FLANGE, spacer 2	1	
15	9850M-05014	SCREW, pan head (+)	1	*

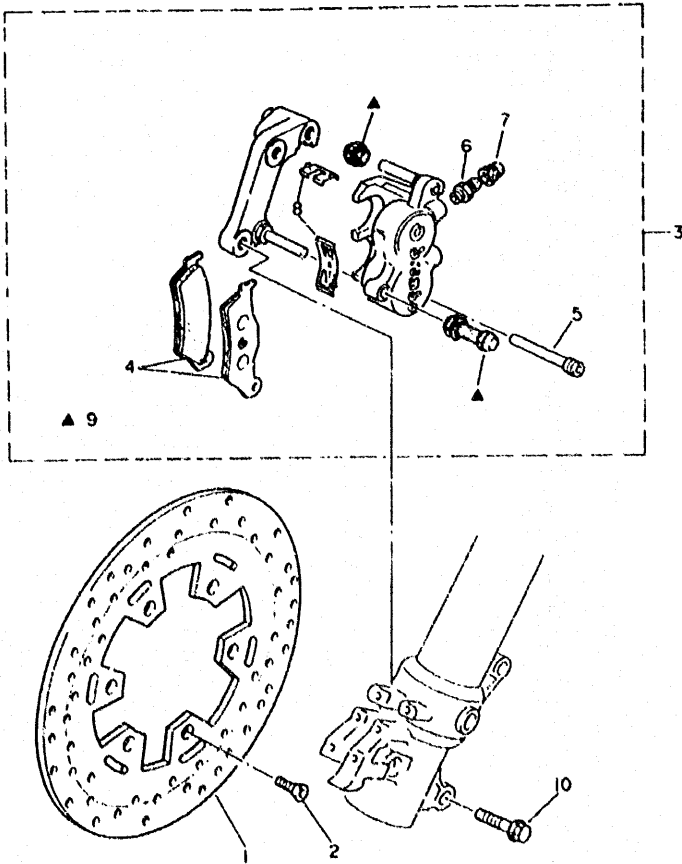


4GV2354-4260

D4

FIG. 27 FRONT BRAKE CALIPER

REF. NO.	PART NO.	DESCRIPTION	Q.TY	REMARKS
1	4GV-F582T-00	FR. DISK BRAKE LH	1	*
2	90149-06272	SCREW	6	
3	4GV-F580T-11	FR. CALIPER ASSY	1	*
4	4GV-W0045-10	BRAKE PAD KIT	1	*
5	4GV-F5924-10	PIN	1	*
6	4DL-F5824-00	SCREW, bleeder	1	*
7	4DL-F5917-00	BOOT, cover	1	*
8	4GV-F5919-20	SUPT. PAD ASSY	1	*
9	4GV-F5917-00	BOOTS	1	*
10	90105-08659	BOLT, flg.	2	



4GV1354-3270

D5

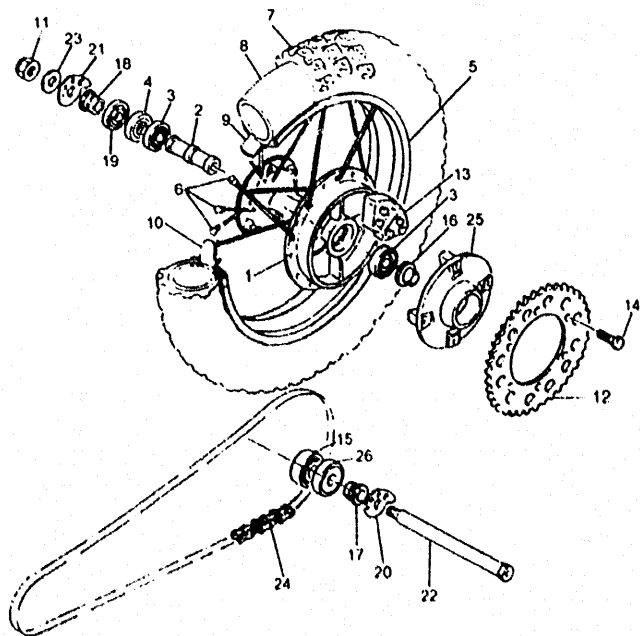


FIG. 28 REAR WHEEL

REF. NO.	PART NO.	DESCRIPTION	Q.TY	REMARKS
1	4GV-F5311-00	HUB, rear	1	•
2	4GV-F5317-00	SPACER, bearing	1	•
3	93306-004X8	BEARING	2	•
4	93102-28667	OIL SEAL	1	•
5	94425-188A7	RIM (2.50x18")	1	•
6	4GV-F5304-10	SPOKE SET, rear	1	•
7	94113-188K4	TIRE (130/80-18")MT70	1	• PIRELLI
8	94214-18891	TUBE (4.50/5.10-18") MD18	1	• PIRELLI
9	94314-18854	BAND, rim (4.00-18")	1	•
10	4GV-F5394-00	SPACER, bead	1	•
11	90185-18104	NUT, self lock	1	•
12	4GV-F5447-00	SPROCKET, drivan (47T)	1	•
13	5Y1-25364-00	DAMPER	4	•
14	4GV-F5411-00	BOLT	4	•
15	93306-304X0	BEARING (6304-2RS1)	1	•
16	90387-208J8	COLLAR	1	•
17	4GV-F5376-00	COLLAR	1	•
18	90387-203V0	COLLAR	1	•
19	4V4-25367-00	COVER, hub dust	1	•
20	3SH-F5388-00	PULLER, chain 1	1	•
21	3SH-F5389-00	PULLER, chain 2	1	•
22	23X-25381-00	AXLE, wheel rr.	1	•
23	90201-200R4	WASHER, plate	1	•
24	94561-43110	CHAIN	1	•
25	4GV-F5366-00	CLUTCH, hub	1	•
26	93101-28828	OIL, seal	1	•

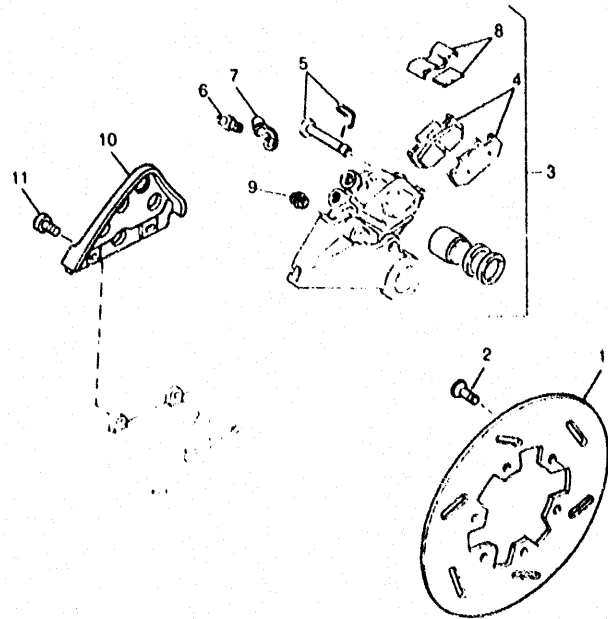


4GV2354-4280

D6

FIG. 29 REAR BRAKE CALIPER

REF. NO.	PART NO.	DESCRIPTION	QTY	REMARKS
1	4GV-F582W-00	DISK, rr. brake rh.	1	*
2	90149-06272	SCREW	6	
3	4GV-F580W-00	RR. CALIPER ASSY	1	*
4	4GV-F5811-00	. PAD, lining compl.	1	*
5	4GV-F5924-00	. PIN, pad	1	*
6	3SH-F5824-00	. SCREW, bleeder	1	*
7	3SH-F5825-00	. CAP	1	*
8	4GV-F5919-10	. SUPT, pad	1	*
9	. BOOT	1	*	
10	4GV-F7491-00	PROTECTOR	1	*
11	9201L-08012	BU.L? button head	2	*



4LW2300-5290

D7

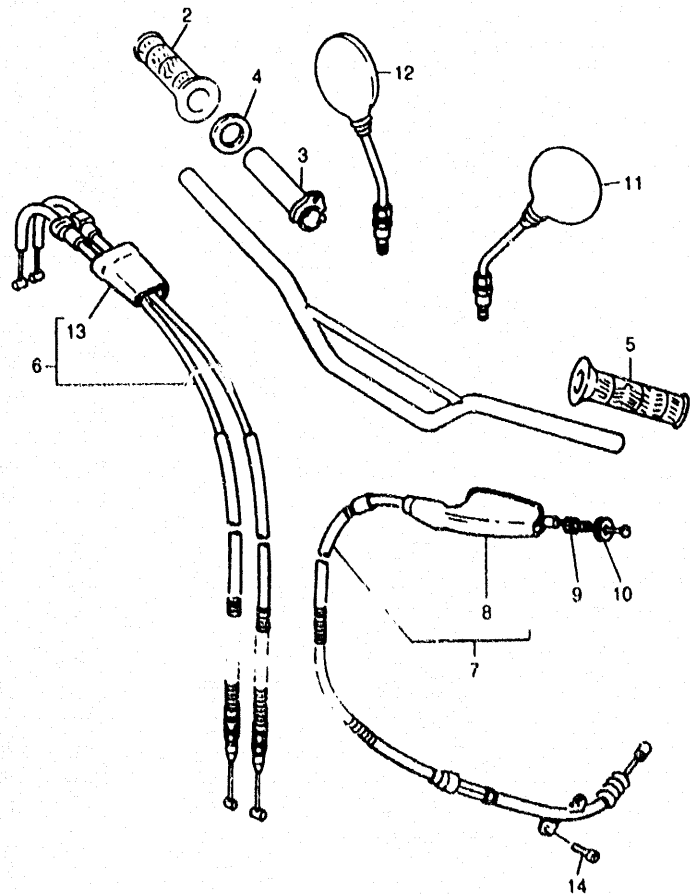


FIG. 30 STEERING HANDLE, CABLE

REF. NO.	PART NO.	DESCRIPTION	Q.TY	REMARKS
1	4GV-F6111-10-T9	HANDLEBAR	1	• UR. COMPETITION SILVER
2	4GV-F6242-00	GRIP, 2 (RH.)	1	•
3	4GV-F6243-00	TUBE, throttle g.	1	•
4	4GV-F6249-00	RING, leaf	1	•
5	4GV-F6241-00	GRIP, 1 (LH.)	1	•
6	4GV-F6302-00	THROTTLE CABLE ASSY	1	•
7	4GV-F6335-10	CLUTCH, wire	1	•
8	4GV-F6339-00	BOOT	1	•
9	90179-08148-BL	NUT	1	•
10	90123-08046-BL	BOLT, wire adjst.	1	•
11	3SH-F6280-10	MIRROR, assy LH.	1	•
12	3SH-F6290-10	MIRROR, assy RH.	1	•
13	4GV-F6316-00	BOOT, throttle	1	•
14	91317-06010	BOLT, hex. socket head	1	•



4GV2354-4300

DB

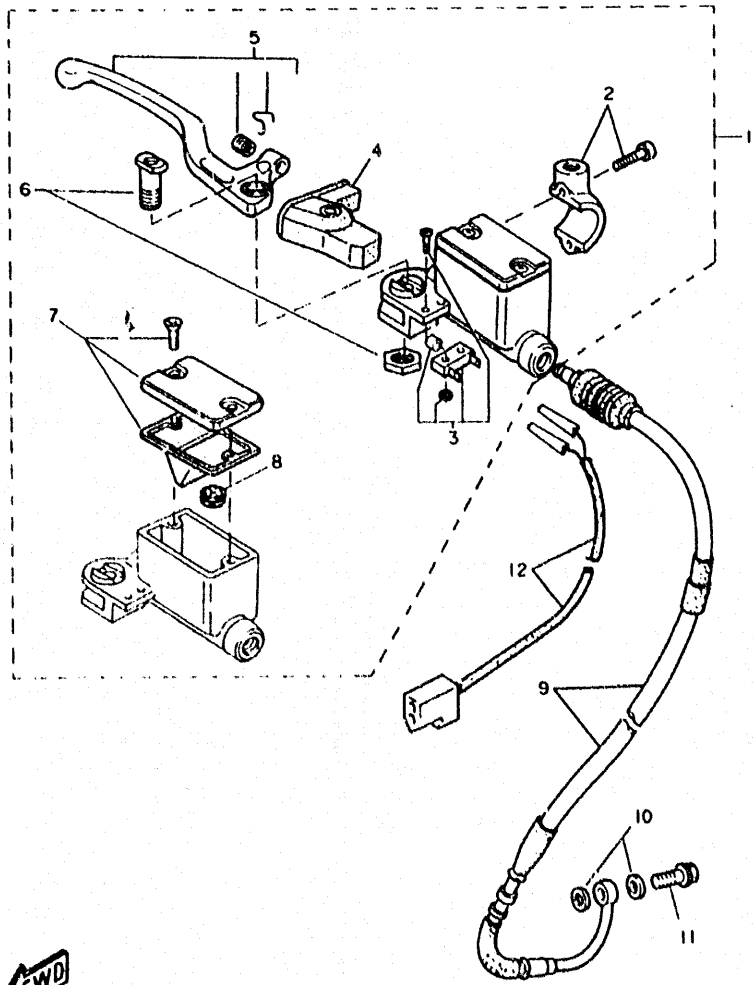


FIG. 31 FRONT MASTER CYLINDER

REF. NO.	PART NO.	DESCRIPTION	Q.TY	REMARKS
1	4GV-F583T-00	FR. MASTER CYL. ASSY	1	•
2	3SH-F5867-00	BRKT, mas. cyl. assy	1	•
3	3SH-H399A-00	BODY STOP SW. ASSY	1	•
4	4GV-F6372-00	COVER, handle lever	1	•
5	4GV-H3922-00	LEVER, 2	1	•
6	3SH-F589F-00	BOLT, brake lever	1	•
7	3SH-F5802-01	CAP, reservoir kit	1	•
8	4GV-F589A-00	COVER, connector	1	•
9	4GV-F5872-00	HOSE, brake	1	•
10	90201-108E6	WASHER, plain	2	•
11	90401-10808	BOLT, union	1	•
12	3SH-H399J-00	CORD COMP.	1	•



4GV1354-3311

D9

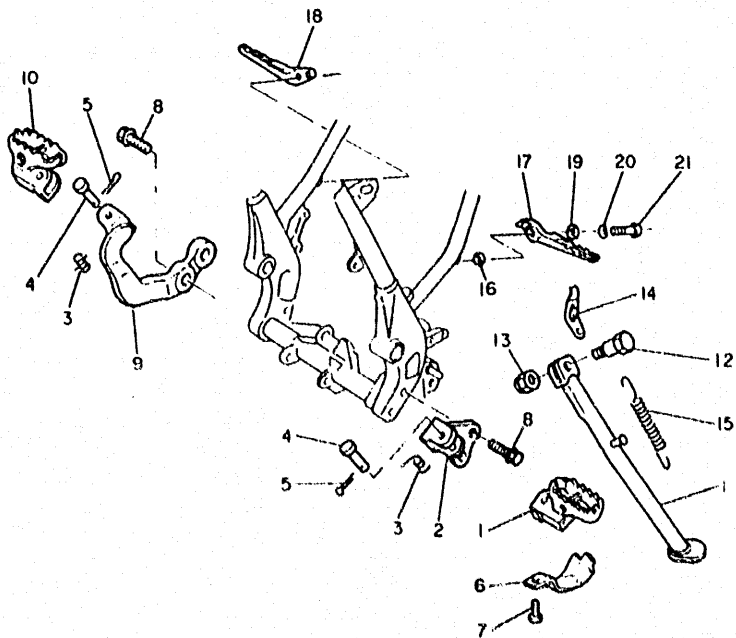


FIG. 32 STAND./FOOTREST

REF. NO.	PART NO.	DESCRIPTION	Q.TY	REMARKS
1	23X-27411-02	FOOTREST, 1	1	
2	4GV-F7412-00-33	BRKT.,1	1	• UR. BLACK
3	90508-20583	SPRG., torsion	2	
4	90240-10101	PIN, clevis	2	
5	91401-25020	PIN, cotter	2	
6	4GV-F742L-00	BRKT., 5	1	•
7	90111-08801	BOLT, button head	1	•
8	95827-10025	BOLT, flg.	3	
9	4GV-F7422-00-33	BRKT., 2	1	• UR. BLACK
10	34K-27421-00	FOOTREST 2	1	
11	4GV-F7311-10-33	STAND, side	1	• UR. BLACK
12	90105-12616	BOLT, flg.	1	
13	90185-12119	NUT, self-locking	1	•
14	4GV-F7315-10	LINK	1	•
15	90506-35473	SPRG., torsion	1	
16	90201-083P5	WASHER, plate	2	
17	4GV-F7431-00	FOOTREST, RR. 1	1	•
18	4GV-F7441-00	FOOTREST, RR. 2	1	•
19	92907-10600	WASHER, plate	2	
20	90504-18031	SPRING, compression	2	
21	90109-085F5	BOLT	2	



4GV1354-3320

D 10

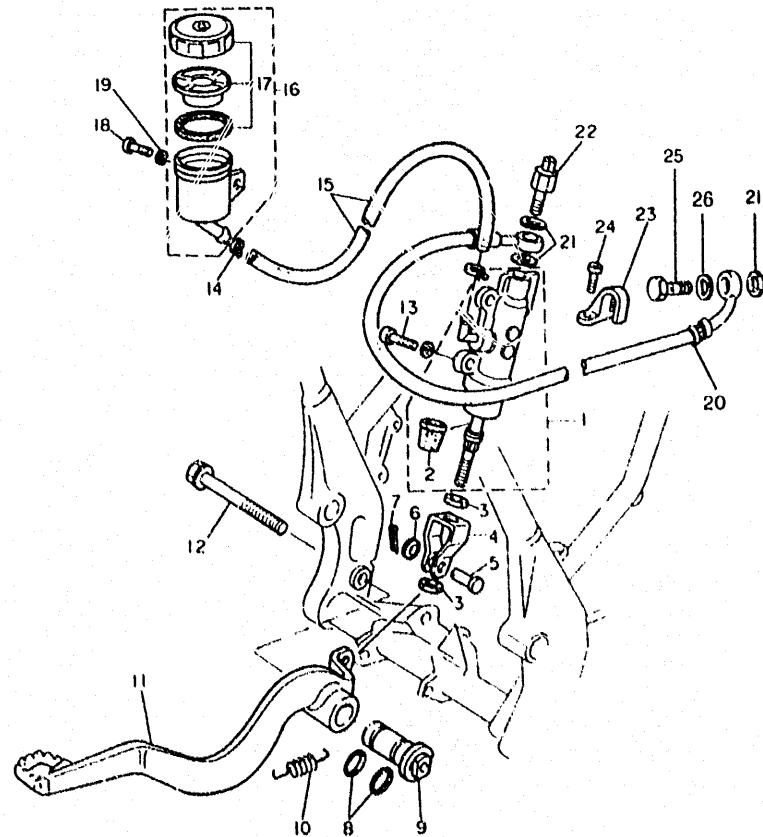


FIG. 33 REAR MASTER CYLINDER

REF. NO.	PART NO.	DESCRIPTION	Q.TY	REMARKS
1	4GV-F583V-00	RR. MASTER CYL.	1	*
2	4GV-F5862-00	BOOT, mas. cyl	1	*
3	9530L-08700	NUT, hex.	2	*
4	4GV-F7222-00	JT.	1	*
5	90240-08124	PIN	1	*
6	90201-08083	WASHER, plain	1	*
7	91401-16012	PIN, split	1	*
8	93210-13016	O-RING	2	*
9	4GV-F7213-01	COLLAR	1	*
10	90506-18838	SPRG.	1	*
11	4GV-F7200-02	PEDAL, brake	1	*
12	9582M-10085	BOLT, flg.	1	*
13	4GV-F7217-00	BOLT	2	*
14	90467-11832	CLIP	2	*
15	4GV-F5895-00	HOSE, reserve	1	*
16	4GV-F5894-00	TANK, reserve	1	*
17	3SH-F5852-50	CAP, reservoir	1	*
18	9131L-06012	BOLT, hex. socket head	1	*
19	9290L-06600	WASHER, plain	1	*
20	4GV-F5873-10	HOSE, brake 2	1	*
21	90201-108E6	WASHER, plain	3	*
22	4DL-H2530-00	RR. STOP SW. ASSY	1	*
23	2VM-25876-00	HOLDER, brake hose 2	2	*
24	90167-04814	SCREW, tapping	4	*
25	90401-10808	BOLT, UNION	1	*
26	90201-108F6	WASHER, PLAIN	1	*



41 W2300-F330

D11

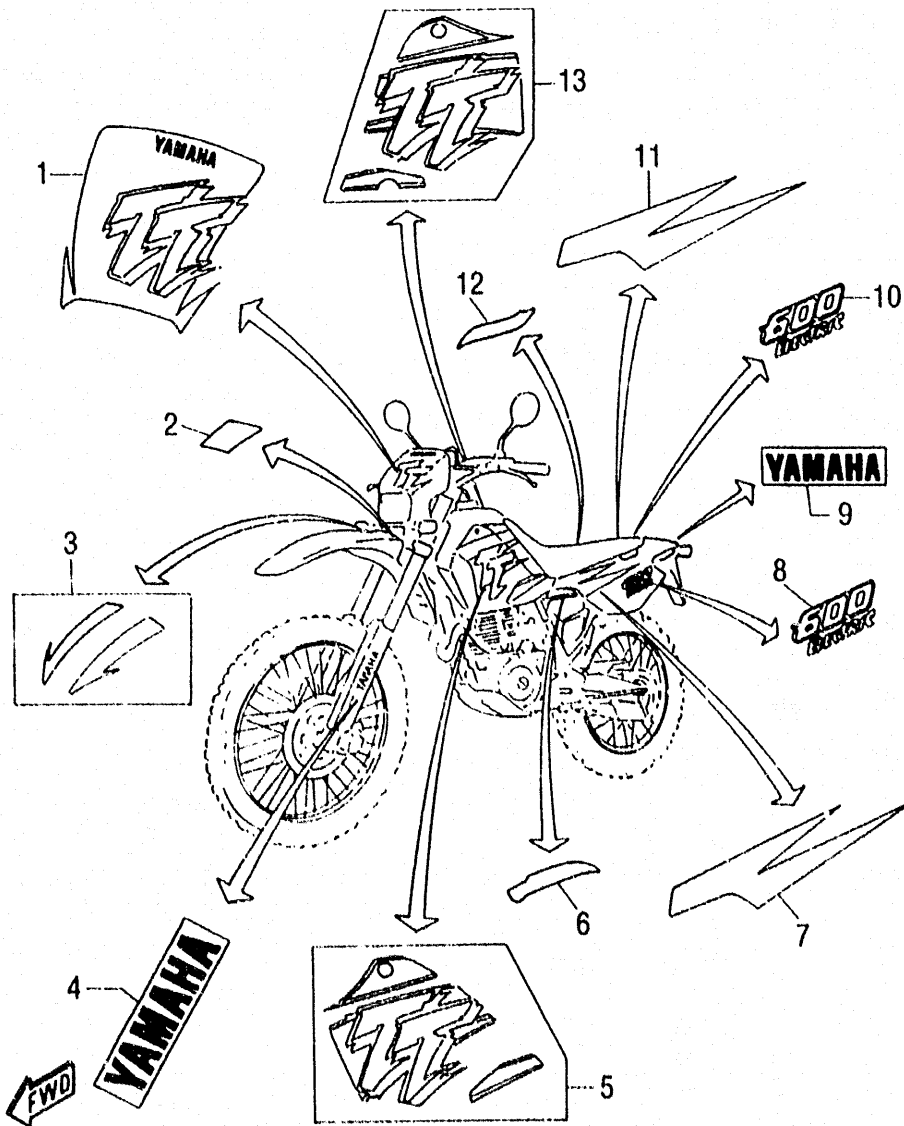


FIG. 54 EMBLEMS

REF. N°.	PART NO.	DESCRIPTION	Q.TY	REMARKS
1	4GV-F8368-00	EMBLEM	1	•
2	4GV-F839F-00	GRAPHIC, 9	1	•
3	4GV-F1570-10	GRAPHIC, FR. FENDER SET	1	•
4	99243-00160	EMBLEM, YAMAHA	1	•
5	4GV-F173L-30	GRAPHIC, SET 1	1	•
6	4GV-F1788-00	GRAPHIC, LH.	1	•
7	4GV-F174J-10	GRAPHIC, 5	1	•
8	4GV-F1782-20	EMBLEM	1	•
9	99244-00080	EMBLEM, YAMAHA	1	•
10	4GV-F1782-20	EMBLEM	1	•
11	4GV-F174K-10	GRAPHIC, 6	1	•
12	4GV-F1789-00	GRAPHIC, RH.	1	•
13	4GV-F174L-30	GRAPHIC, SET 2	1	•

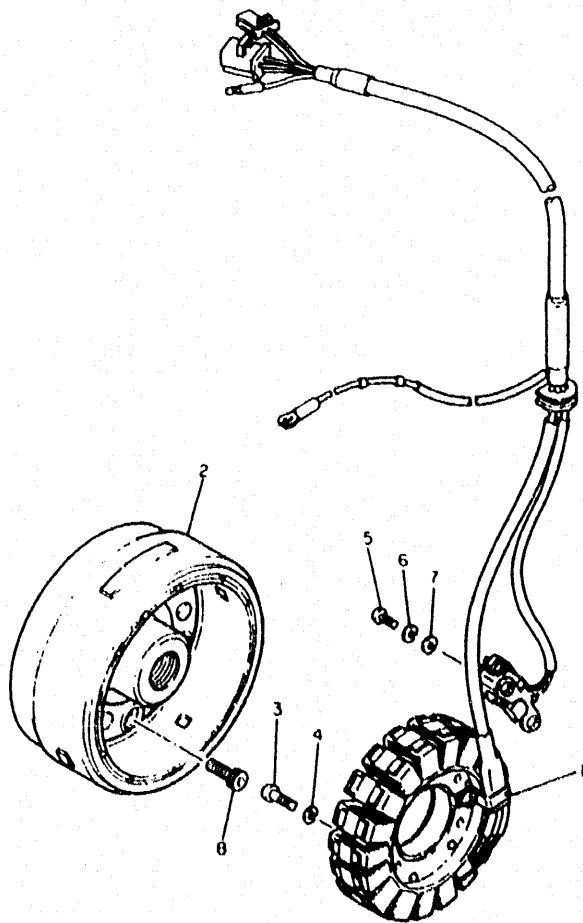


FIG. 35 GENERATOR

REF. NO.	PART NO.	DESCRIPTION	Q.TY	REMARKS
1	3TB-81410-00	STATOR, assy	1	
2	3TB-81450-00	ROTOR, assy	1	
3	98507-06025	SCREW, pan head	3	
4	92907-06100	WASHER	3	
5	98507-05016	SCREW, pan head	2	
6	92907-05100	WASHER, spring	2	
7	92907-05600	WASHER, plate	2	
8	90110-08193	BOLT, hex. socket head	3	



3TB351-0340

D 13

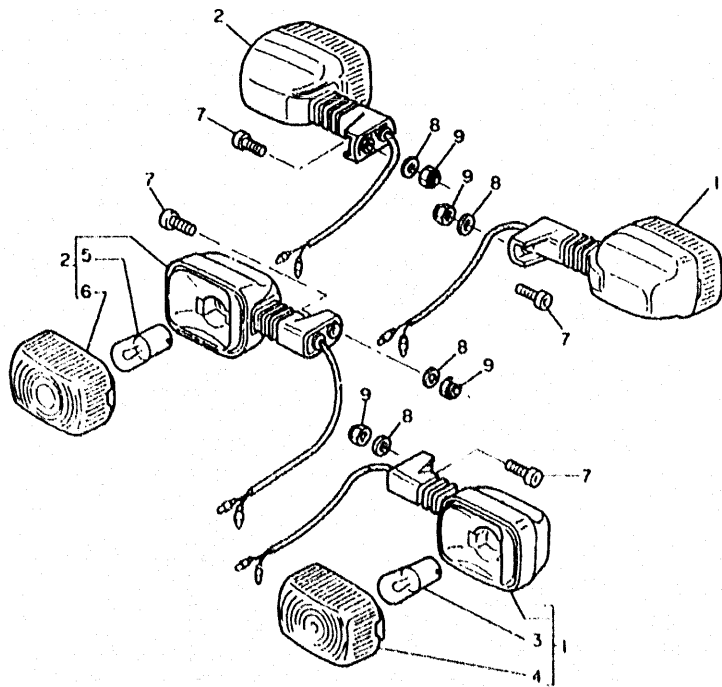


FIG. 36 FLASHER LIGHT

REF. NO.	PART NG.	DESCRIPTION	Q.TY	REMARKS
1	4GV-H3310-00	FLASHER, left assy 1 LH.	2	*
2	4GV-H3320-00	FLASHER, right assy 2 RH.	2	*
3	4DL-H3311-00	- BULB, flasher 12V-10W	2	L.M.
4	4DL-H3332-00	- LENS, flasher	2	*
5	4DL-H3311-00	- BULB, flasher 12V-10W	2	L.M.
6	4DL-H3332-00	- LENS, flasher	2	*
7	9131M-06020	BOLT, hex socket	4	*
8	9290L-06200	WASHER, plain	4	*
9	90185-06837	NUT, nylon	4	*



4GV1354 3360

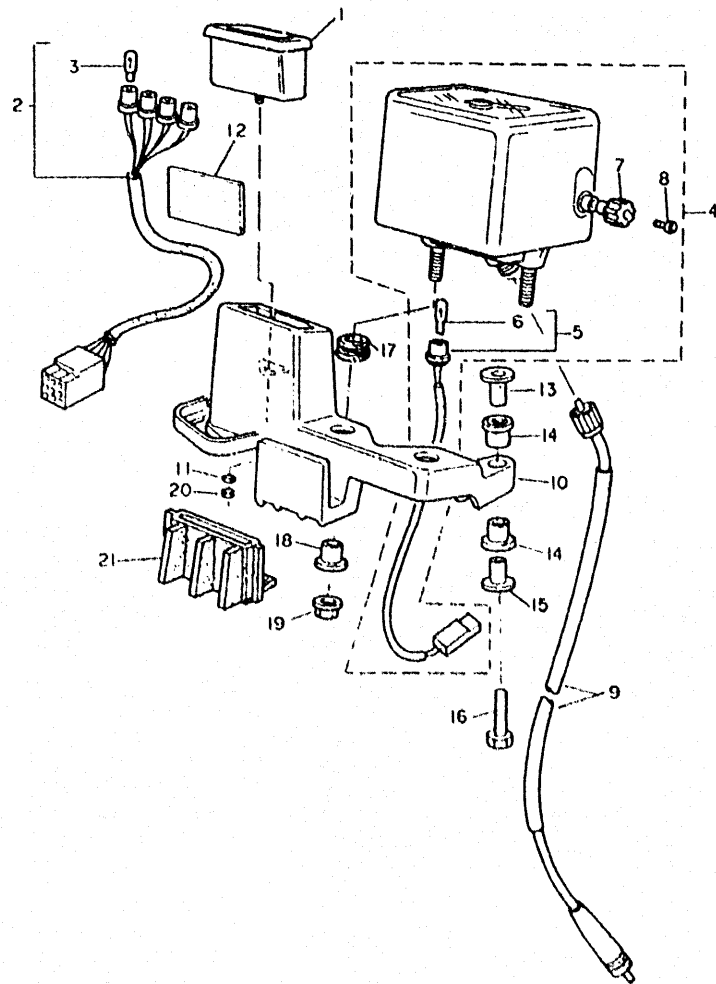


FIG. 37 METER

REF. NO.	PART NO.	DESCRIPTION	Q.TY	REMARKS
1	4GV-H3587-00	BODY, pilot light	1	*
2	4GV-H3520-00	SOCKET CORD ASSY	1	*
3		BULB (12V-1.2W)	4	* L.M.
4	4GV-H3570-10	SPEEDOMETER ASSY	1	*
5	4GV-H3536-00	SOCKET, meter assy	1	*
6		BULB (12V-1.2W)	1	* L.M.
7	3SH-H3578-00	KNOB, meter	1	*
8	4GV-H357R-00	BOLT, meter	1	*
9	4GV-H3550-00	SPEEDO. CABLE ASSY	1	*
10	4GV-H3519-01	BRKT., meter	1	*
11	93210-038C3	O-RING	1	*
12	4GV-H3543-00	DAMPER, brkt.	1	*
13	90387-068H2	COLLAR	2	*
14	4GV-H3523-00	DAMPER	4	*
15	90387-068H5	COLLAR	2	*
16	9701L-06040	BOLT, hex.	2	*
17	90480-14865	GROMMET	2	*
18	90387-06518-BL	COLLAR	2	*
19	90185-06830	NUT, flg.	2	*
20	4GV-F354L-00	NUT, shaft supt.	1	*
21	4GV-H3592-01	DAMPER	1	*



4GV1354-3370

CONTENTS

GENERAL SPEC.

ENGINE

Fig. 1	CYLINDER HEAD	1
Fig. 2	CYLINDER	2
Fig. 3	CRANKSHAFT - PISTON	3
Fig. 4	VALVE	4
Fig. 5	CAMSHAFT - CHAIN	5
Fig. 6	OIL PUMP	6
Fig. 7	INTAKE	7
Fig. 8	CARBURETOR	9
Fig. 9	EXHAUST	11
Fig. 10	CRANKCASE	12
Fig. 11	CRANKCASE COVER 1	13
Fig. 12	STARTER	14
Fig. 13	CLUTCH	15
Fig. 14	TRANSMISSION	16
Fig. 15	SHIFT CAM FORK	17
Fig. 16	SHIFT SHAFT	18

CHASSIS

Fig. 17	FRAME	19
Fig. 18	FENDER	21
Fig. 19	SIDE COVER/OIL TANK	22
Fig. 20	REAR ARM	23
Fig. 21	REAR SUSPENSION	25
Fig. 22	STEERING	26
Fig. 23	FRONT FORK	27
Fig. 24	FUEL TANK	29
Fig. 25	SEAT	30
Fig. 26	FRONT WHEEL	31
Fig. 27	FRONT BRAKE CALIPER	32
Fig. 28	REAR WHEEL	33
Fig. 29	REAR BRAKE CALIPER	34
Fig. 30	STEERING HANDLE, CABLE	35
Fig. 31	FRONT MASTER CYLINDER	36
Fig. 32	STAND/FOOTREST	37
Fig. 33	REAR MASTER CYLINDER	38
Fig. 34	EMBLEMS	39
Fig. 35	GENERATOR	40
Fig. 36	FLASHER LIGHT	41
Fig. 37	METER	42
Fig. 38	HEADLIGHT	43
Fig. 39	TAILLIGHT	44
Fig. 40	HANDLE SWITCH, LEVER	45
Fig. 41	ELECTRICAL 1	46
Fig. 42	ELECTRICAL 2	47

INDEX (GENERAL SPEC.)

NUMERICAL INDEX

INDIVIDUAL SPEC.

Fig. 43	FRAME	48
Fig. 44	FENDER	49
Fig. 45	STAND/FOOTREST	50
Fig. 46	FLASHER LIGHT	51
Fig. 47	ELECTRICAL 1	52

INDEX (INDIVIDUAL SPEC.)

NUMERICAL INDEX

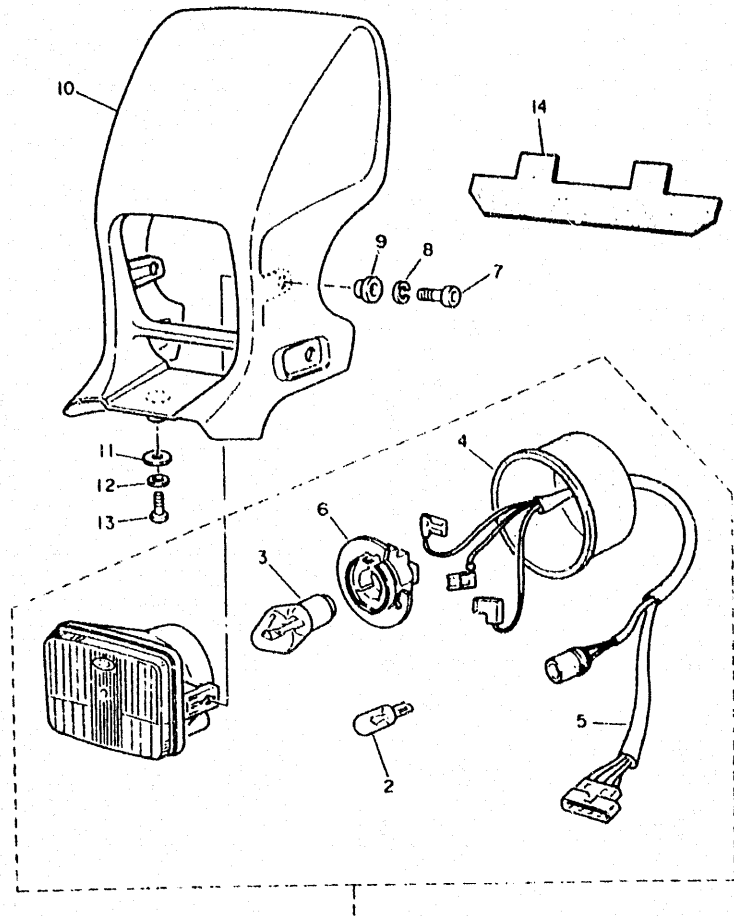


FIG. 38 HEADLIGHT

REF. NO.	PART NO.	DESCRIPTION	Q.TY	REMARKS
1	4LW-H4310-00	HEADLIGHT UNIT ASSY	1	*
2		BULB (12V-5W)	1	* L.M.
3		BULB (12V-55/60W)	1	* L.M.
4	4LW-H4397-00	COVER	1	*
5	4LW-H4312-00	CORD, assy	1	*
6	4LW-H4393-00	HOLDER, bulb	1	*
7	9131L-06016	BOLT, hex. socket head	2	*
8	9290L-061P0	WASHER, spring.	2	*
9	90387-062M9	COLLAR	2	*
10	4GV-F8351-01-PO	BODY, cowling	1	* UR VIVID RED SOLID A
11	90201-06072	WASHER, plain	1	*
12	9290M-05600	WASHER, plain	1	*
13	9731L-05012	BOLT, hex.	1	*
14	4GV-H4396-00	COVER	1	* *

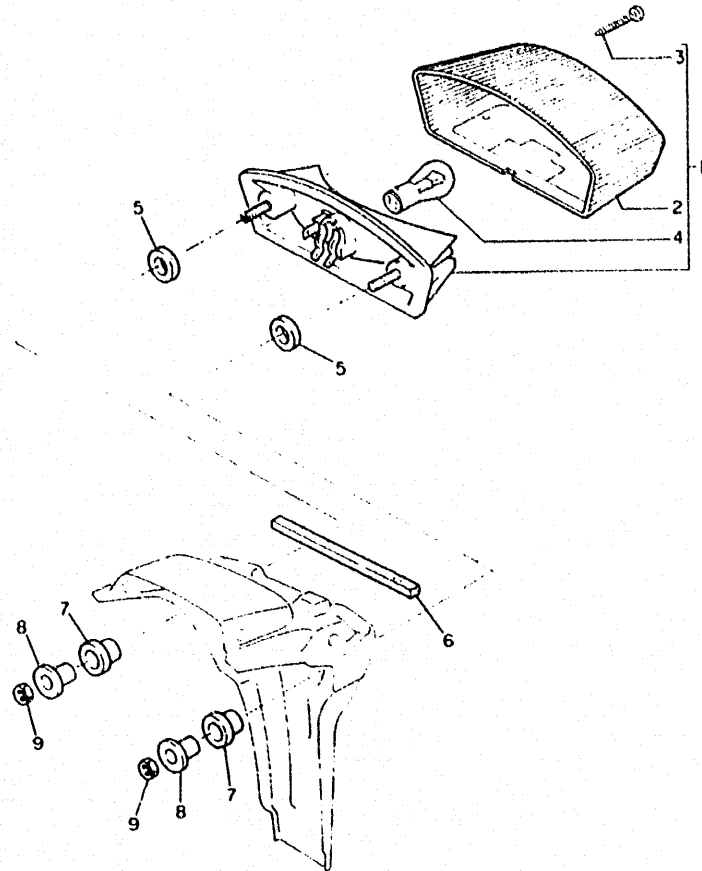


4LW1300-3480

E2

FIG. 39 TAILLIGHT

REF. NO.	PART NO.	DESCRIPTION	Q.TY	REMARKS
1	4GV-H4710-00	TAILLIGHT UNIT ASSY	1	*
2	4DL-H4721-00	LENS TAIL ASSY	1	*
3	97701-40132	SCREW, tapping (+)	2	*
4	4GV-H4714-00	BULB, taillight (12V-21/5W)	1	*
5	4GV-H4736-00	DAMPER, taillight	2	*
6	4GV-H4737-00	DAMPER, taillight 2	1	*
7	4GV-H3523-00	DAMPER	2	*
8	90387-068H2	COLLAR	2	*
9	90185-06837	NUT, nylon	2	*



FWD

4GV1354-3390

E3

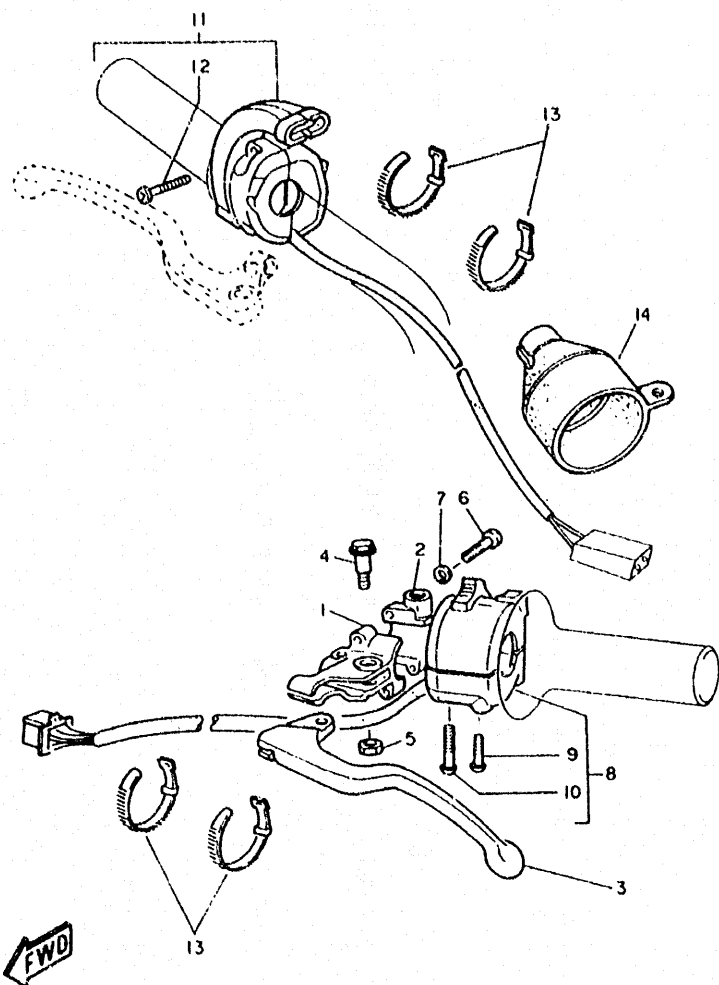


FIG. 40 HANDLE SWITCH, LEVER

REF. NO.	PART NO.	DESCRIPTION	Q. TY	REMARKS
1	1LN-82911-00	HOLDER, lever 1	1	
2	33G-82913-01	HOLDER, lever lower 1	1	
3	3FA-83912-00	LEVER 1	1	
4	90109-06799	BOLT	1	
5	95607-06100	NUT, U	1	
6	98507-03020	SCREW, pan head	2	
7	92907-05100	WASHER, spring	2	
8	3TB-8397A-00	SWITCH, case assy	1	
9	9850M-05030	SCREW, pan head	1	*
10	9850M-05035	SCREW, pan head	1	*
11	4GV-H3975-00	SWITCH CASE ASSY	1	*
12	9850M-05016	SCREW, pan head	2	*
13	437-83936-01	BAND, switch cord	4	
14	10V-82599-00	COVER	1	

4GV2364-4400

E 4

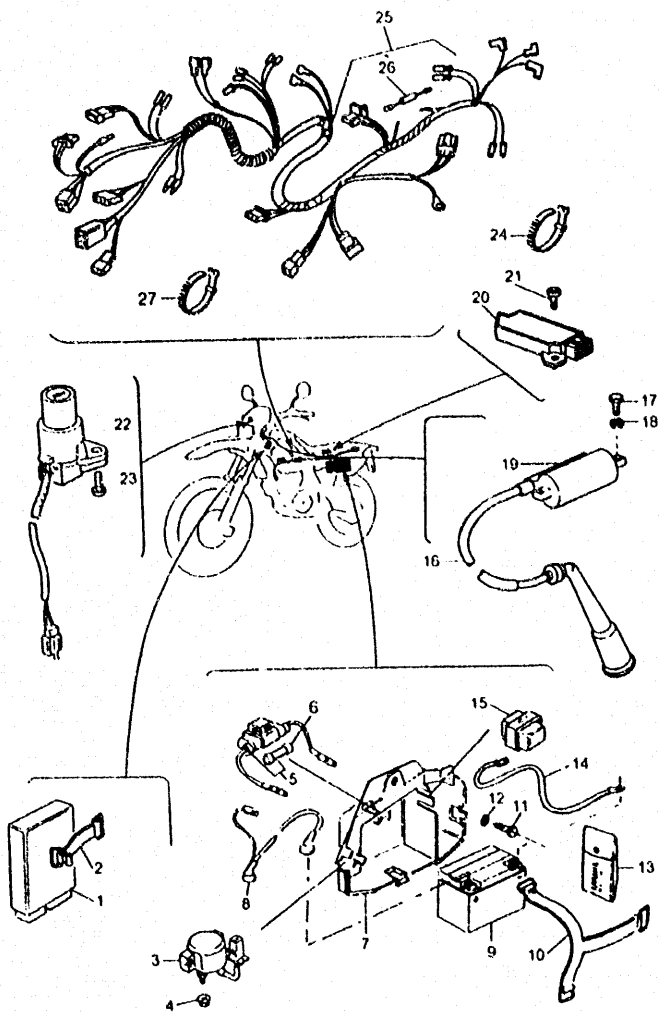


FIG. 41 ELECTRICAL 1

REF. NO.	PART NO.	DESCRIPTION	Q.TY	REMARKS
1	3TB-82305-00	IGNITOR UNIT ASSY	1	
2	26L-82131-00	BAND	1	
3	3AY-81040-00	STARTER RELAY ASSY	1	
4	90185-06830	NUT, FLG.	2	*
5	2UJ-82150-02	FUSE HOLDER ASSY	1	
6	14B-82151-00	FUSE (20A)	1	
7	4GV-F177G-00	BOX, battery	1	*
8	4GV-H2116-00	WIRE MINUS LEAD, 2	1	*
9	4GV-H2100-00	BTRY. ASSY (12V-8AH)	1	*
10	4GV-H2131-00	BAND, battery	1	*
11	9701L-06014	BOLT, hex	1	
12	90387-062M9	COLLAR	1	*
13	4GV-F8100-10	TOOL, kit	1	*
14	4GV-H2115-00	WIRE PLUS LEAD 1	1	*
15	12R-81950-01	RELAY ASSY	1	
16	371-82370-00	PLUG	1	
17	9700L-05020	BOLT, hex	2	*
18	9290L-05600	WASHER, plain	2	*
19	4GV-82310-00	IGN. COIL ASSY	1	
20	47X-81960-A2	RECT. AND REGULATOR ASSY	1	
21	9201L-06012	BOLT, button head	2	*
22	3TB-82501-10	MAIN, SW. STRG. LOCK	1	
23	4GV-H252V-00	SCREW, special	2	*
24	4GV-H3936-00	BAND, sw. cord	13	*
25	4GV-H2590-10	WIRE HARNESS ASSY	1	*
26	4GV-H1980-10	DIODE ASSY	1	*
27	2AJ-F3192-50	BAND, sw. cord	1	*

FWD
4GV2354-4410

E5

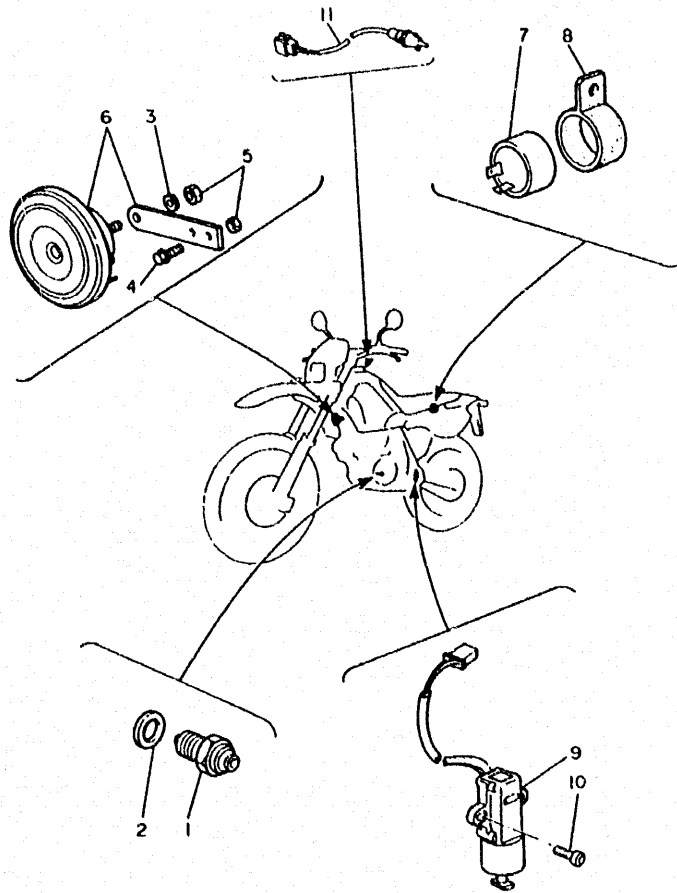


FIG. 42 ELECTRICAL 2

REF. NO.	PART NO.	DESCRIPTION	Q.TY	REMARKS
1	4KM-82540-00	NEUTRAL SW. ASSY	1	
2	90430-10171	GASKET	1	
3	9290L-06600	WASHER, plain	1	*
4	9131L-06012	BOLT, hex. socket head	1	*
5	90185-06837	NUT, nylon	1	*
6	3WW-83371-01	HORN	1	
7	4DL-H3350-00	FLASHER, relay assy	1	*
8	4DL-H3353-00	DAMPER, relay	1	*
9	3LD-82566-40	SWITCH, side stand	1	
10	90110-05835	SCREW, pan head	2	
11	2GV-82917-00	SWITCH	1	



4GV2354-4420

E 6

INDEX
(GENERAL SPEC.)

F₁

NUMERICAL INDEX

PART NO.	GRID NO.	PART NO.	GRID NO.	PART NO.	GRID NO.	PART NO.	GRID NO.	PART NO.	GRID NO.
4GV-E1166-00	B13	4GV-F214-10	C12	4GV-F415F-00	J2	3SH-F589F-00	D9	4GV-H252V-00	E5
4GV-E4430-00	B8	4GV-F2216-00	C12	4GV-F416G-00	D2	4DL-F5917-00	D5	4DL-H2530-00	D11
4GV-E4454-00	B8	4GV-F2217-10	C12	3SH-F4181-00	C6	4GV-F5917-00	D5	4GV-H2590-10	E5
4GV-E4457-00	B8	4GV-F2221-10	C12	4GV-F4182-00	D2	4GV-F5917-00	D7	4GV-H3310-C0	D14
4GV-E4611-00	B12	4GV-F2223-10	C12	3SH-F4231-00	D2	4GV-F5919-10	D7	4DL-H3311-00	D14
4GV-E4628-00	B12	4GV-F2253-10	C12	4GV-F4240-20	D2	4GV-F5919-20	D5	4DL-H3311-00	D14
4LW-E4711-00	B12	4GV-F2311-00	C10	4GV-F4500-00	D2	4GV-F5924-00	D7	4GV-H3320-00	D14
4GV-E4728-00	B12	4GV-F3102-10	C14	3SH-F4512-0J	D2	4GV-F5924-10	D5	4DL-H3332-00	D14
4GV-E4752-00	B12	4GV-F3103-10	C14	4GV-F4610-C0	D2	4GV-F6111-10-T9	D8	4DL-H3332-00	D14
4GV-E8110-02	C5	4GV-F3111-00	C14	4GV-F4731-30	D3	4GV-F6241-00	D8	4DL-H3350-00	E6
4GV-F1105-00-UJ	C6	4GV-F3111-00	C14	4GV-F4734-30	D3	4GV-F6242-00	D8	4DL-H3350-00	E6
4GV-F1110-00-UJ	C6	4GV-F3120-10	C14	4GV-F477J-30	D3	4GV-F6243-00	D8	4GV-H3510-01	D15
4GV-F161-00	C6	4GV-F312G-00	C14	4GV-F5104-00	D4	4GV-F6249-00	D8	4GV-H3520-00	D15
4GV-F1315-00	C6	4GV-F312G-00	C14	4GV-F5181-00	D4	3SH-F6280-10	D8	4GV-H3520-00	E3
4GV-F1316-00-UJ	C6	4GV-F3136-10	C14	4GV-F5304-10	D6	3SH-F6290-10	D8	4GV-H3520-00	D15
4GV-F1471-00	C6	4GV-F3136-10	C14	4GV-F5311-00	D6	4GV-F6302-00	D8	4GV-H3530-00	D15
4GV-F1511-00	C8	4GV-F3141-00	C14	4GV-F5317-00	D6	4GV-F6316-00	D8	4GV-H3540-00	D15
4GV-F1570-10	D12	4GV-F3141-00	C14	4GV-F5366-00	D6	4GV-F6335-10	D8	4GV-H3550-00	D15
4GV-F1611-00	C8	4GV-F3142-00	C14	4GV-F5376-00	D6	4GV-F6339-00	D8	4GV-H3570-10	D15
4GV-F1629-00	C10	4GV-F314C-00	C14	3SH-F5388-00	D6	4GV-F6372-00	D9	3SH-H3570-00	D15
4GV-F1639-00	C8	4GV-F3143-00	C14	3SH-F5389-00	D6	4GV-F7114-00	B12	4GV-H3570-00	D15
4GV-F1685-00	C8	4GV-F3143-00	C14	4GV-F5394-00	D4	4GV-F7200-02	D11	4GV-H3587-00	D15
4GV-F1711-00	C9	4GV-F3146-00	C14	4GV-F5394-00	D6	4GV-F7213-01	D11	4GV-H3592-01	D15
4GV-F1721-00	C9	4GV-F3146-00	C14	4GV-F5411-00	D6	4GV-F7217-00	D11	4GV-H3922-00	D9
4GV-F1731-00-PO	C9	4GV-F314H-00	C14	4GV-F5447-00	D6	4GV-F7222-00	D11	4GV-H3936-00	E5
4GV-F173L-30	D12	4GV-F314J-00	C14	3SH-F5802-01	D9	4GV-F7311-10-33	D10	4GV-H3975-00	E4
4GV-F1741-00-PO	C9	4GV-F3153-00	C14	4GV-F580T-11	D5	4GV-F7315-10	D10	3SH-H399A-00	D9
4GV-F174A-00	C9	4GV-F3153-00	C14	4GV-F580W-00	D7	4GV-F7412-00-33	D10	3SH-H399J-00	D9
4GV-F174J-10	D12	4GV-F316A-00	C14	4GV-F5811-00	D7	4GV-F7422-00-32	D10	4LW-H4310-00	E2
4GV-F174K-10	D12	4GV-F316A-00	C14	3SH-F5824-00	D7	4GV-F742L-00	D10	4LW-H4312-00	E2
4GV-F174L-30	D12	4GV-F3170-00	C14	4DL-F5824-00	D5	4GV-F7431-00	D10	4LW-H4393-00	E2
4GV-F1751-01-98	C9	4GV-F3170-00	C14	3SH-F5825-00	D7	4GV-F7441-00	D10	4GV-H4396-00	E2
4GV-F175N-00	C9	4GV-F317M-00	C14	4GV-F582T-00	D5	4GV-F7491-00	D7	4LW-H4397-00	L2
4GV-F176E-00	C6	2AJ-F3192-50	E5	4GV-F582W-00	D7	4GV-F8100-10	E5	3SH-H4551-00	C3
4GV-F177G-00	E5	2AJ-F3192-50	C10	4GV-F583T-00	D9	4GV-F8135-00	C12	4GV-H4710-00	E3
4GV-F1782-20	D12	4GV-F3194-00	C14	4GV-F583V-00	D11	4GV-F8351-01-PO	E2	4GV-H4714-00	E3
4GV-F1782-20	D12	4GV-F319K-00	C14	3SH-F5852-50	D11	4GV-F8368-00	D12	4DL-H4721-00	E3
4GV-F1788-00	D12	4GV-F319K-00	C14	4GV-F5862-00	D11	4GV-F839F-00	D12	4GV-H4736-00	E3
4GV-F1789-00	D12	4GV-F3340-00	C14	3SH-F5867-00	D9	4GV-H183G-00	B15	4GV-H4737-00	E3
4GV-F2110-01	C10	4GV-F3364-00	C14	4GV-F5872-00	D9	4GV-H1980-00	E5	4GV-H5130-00	C8
4GV-F2151-00	C10	4GV-F3364-00	C14	4GV-F5873-10	D11	4GV-H2100-00	E5	4GV-W0045-10	D5
4GV-F2156-00	C10	4GV-F354L-00	D15	4GV-F5894-00	D11	4GV-H2115-00	E5	1VJ-W1141-00	B4
4GV-F217A-00	C10	4GV-F4110-00-P2	D2	4GV-F5995-00	D11	4GV-H2116-00	E5	5Y1-W1343-00	B7
4GV-F2210-10-J5	C12	3SH-F4122-00	D2	4GV-F589A-00	D9	4GV-H2131-00	E5	4GV-WF341-00	C13

NUMERICAL INDEX

PART NO.	GRID NO.	PART NO.	GRID NO.	PART NO.	GRID NO.	PART NO.	GRID NO.	PART NO.	GRID NO.
3TB-11101-01	B2	3TB-12210-00	B6	5Y1-14349-00	B10	4DW-15455-00	B14	3XV-18535-00	C4
583-11127-00	B1	4DW-12213-00	B6	2KF-14355-00	B10	4DW-15462-00	B14	3YF-18540-00	C4
583-11127-00	B3	3TB-12215-00	B2	5Y1-14356-00	B10	1JK-15486-00	B14	136-18542-00	C4
4H7-11133-10	B2	34K-12231-00	B6	1JK-14357-00	B10	1VJ-15511-00	B15	5H0-2130L-01	C6
34K-11145-00	B4	34K-12241-00	B6	30X-14358-00	B10	1VJ-15512-00	B15	34L-21485-00	C6
2KF-11181-01	B3	583-13113-00	B7	5Y1-14358-00	B10	3YF-15515-00	B15	34L-21486-00	C6
1L9-11186-00	B2	3AJ-13161-01	B7	5Y1-14384-00	B10	1VJ-15517-00	B15	34K-21621-01	B8
5Y1-11187-00	B2	3AJ-13300-01	B7	2JN-14385-00	B10	1VJ-15521-00	B15	2J5-21732-00	C6
214-11198-01	B7	3AJ-13325-00	B7	6E5-14386-01	B10	1VJ-15522-00	B15	34K-21771-00	C9
3TB-11310-00	B3	3SX-13329-00	B7	34K-14401-01	B8	3TB-15590-01	B15	1VJ-22123-00	C10
1VJ-11351-00	B3	4DW-13415-00	B7	34K-14412-01	B8	3TB-15594-00	B15	307-22123-00	C13
5TB-11400-00	B4	4X7-13440-01	B7	34K-14426-00	B8	3AJ-16111-00	C2	156-22127-00	C10
34K-11454-00	B4	2WK-13447-00	B7	26A-14436-00	B8	3AJ-16150-00	C2	3JD-22128-00	C10
5Y1-11496-01	B4	34K-13464-00	B7	34K-14451-01	B8	2JN-16154-00	C2	55K-22129-00	C10
5Y1-11531-00	B4	4GV-13465-00	B7	43F-14453-00	B8	5Y1-16321-00	C2	3R4-22129-00	C10
2JT-11536-00	B4	16G-13569-00	B8	34K-14455-00	B8	360-16325-00	C2	1VJ-22141-00	C10
34K-11565-02	B4	43F-13586-01	B8	34K-14458-02	B8	5Y1-16331-01	C2	3XD-22147-00	C10
34L-11610-00	B4	1VJ-13596-00	B8	51Y-14462-00	B8	5Y1-16351-00	C2	30X-22178-00	C6
34L-11610-20	B4	2HX-14103-00	B10	34K-14473-02	B8	34K-16356-00	C2	23X-2217F-00	C10
34L-11610-10	B4	14T-14104-00	B10	34K-14484-00	B8	5Y1-16357-00	C2	4V4-22184-00	C6
3TB-11631-00-YO	B4	5Y1-14105-00	B10	34K-14493-01	B8	1W1-16358-01	C2	3XP-22199-03	C10
1JK-11633-01	B4	2JN-14107-00	B10	5Y1-14536-00	B10	2JN-16371-00	C2	3LD-2219X-01	C10
3TB-11636-00	B4	2KF-1410A-00	B10	5Y1-14572-00	B10	4GV-16380-10	C2	3XJ-22355-00	C10
3TB-11638-00	B4	1XL-14131-01	B12	3YF-14613-01	B12	5Y1-16380-00	C2	3XJ-23125-L0	C14
3TB-11651-00	B4	30X-14148-00	B10	3YF-14755-00	B12	34K-17121-01	C3	3XJ-23125-L0	C14
1VJ-11681-00	B4	5Y1-14149-00	B10	4BD-14766-00	B12	1VJ-17131-00	C3	4DA-23144-L0	C14
1VJ-12111-00	B5	5Y1-14159-00	B10	4BD-14766-00	B12	34K-17141-00	C3	4DA-23144-L0	C14
5Y1-12113-00	B5	7KF-14162-00	B10	1JK-1490A-00	B10	2JT-17151-01	C3	4DA-23145-L0	C14
5Y1-12114-00	D5	1JK-14197-00	B10	4GV-1490J-00	B10	3AJ-17211-00	C3	4DA-23145-L0	C14
4H7-12116-00	B5	3TD-14197-00	B10	4GV-1490J-10	B10	2JT-17221-00	C3	4EW-2314E-L0	C14
2F3-12117-00	B5	1JK-14197-00	B10	3GV-1490K-00	B10	1VJ-17231-00	C3	4DA-2314F-L0	C14
1J7-12118-00	B5	5Y1-14198-00	B10	1JK-14940-01	B10	3AJ-17241-00	C3	4DA-2314G-L0	C14
1J7-12119-01	B5	7KF-14227-00	B10	3DS-15100-00	B13	2JT-17251-00	C3	3XJ-23171-L0	C14
1VJ-12121-00	B5	1VJ-14286-00	B10	3Y6-15144-00	B13	2RW-17402-00	C3	3XJ-23171-L0	C14
2NX-12146-00	B5	1JK-14291-00	B10	3Y6-15167-00	B13	2RW-17411-00	C3	3R4-23317-00	C13
34K-12151-00	B5	2JN-14293-00	B10	5Y1-15383-00	B13	5Y1-17471-00	C3	3XP-23318-00	C13
2NX-12156-00	B5	4GV-14301-01	B10	3TB-15411-01	B14	5Y1-18101-02	C5	4DA-23346-L0	C14
2NX-12159-00	B5	1XL-14312-55	B10	3TB-15415-00	B14	43F-18102-02	C5	3SP-23356-L0	C14
34K-12161-00	B5	2KF-14341-00	B10	2WK-15418-01	B14	34K-18120-00	C5	3R4-23389-00	C14
34K-12162-00	B5	43F-14342-24	B10	2KF-15421-00	B14	2KF-18140-00	C4	2HG-23416-00	C13
34K-12163-00	B5	30X-14343-55	B10	5Y1-15427-01	B7	4PT-18511-00	C4	3SP-23418-00	C13
2NX-12166-00	B5	288-14343-70	B10	3DS-15430-00	B14	4PT-18512-00	C4	3SP-23441-00	C13
1JK-12171-00	B6	288-14343-73	B10	1JK-15449-00	B14	4PT-18513-00	C4	4AA-23442-01-T9	C13
3TB-12176-00	B6	288-14343-75	B10	4DW-15451-00	B14	3YF-18531-00	C4	34X-24186-01	D2

NUMERICAL INDEX

PART NO.	GRID NO.	PART NO.	GRID NO.	PART NO.	GRID NO.	PART NO.	GRID NO.
360-24512-00	B10	90105-06601	C10	90170-16343	B4	90201-100F7	C10
4FD-24524-00	D2	90105-07087	B6	90170-20274	C2	90201-10124	B3
214-24535-00	B10	90105-08505	B3	90170-20327	C2	90201-10430	C12
4GV-25111-00	D4	90105-08659	D5	90170-36394	C13	90201-10590	B3
146-25116-00	D4	90105-10286	C6	90176-08026	B3	90201-108E6	D11
4GV-25190-00	D4	90105-12616	D10	90179-06668	B12	90201-108E6	D11
5Y1-25364-00	D6	90109-063E8	B5	90179-08148-BL	D8	90201-108E6	D9
4V4-25367-00	D6	90109-063E9	B2	90179-10201	B3	90201-10M05	C10
23X-25381-00	D6	90109-06416	B2	90179-10279	B3	90201-10M05	C12
2VM-25876-00	D11	90109-06419	B7	90179-14317	B4	90201-120A5	C10
4N0-27114-00	C6	90109-06799	E4	90179-18552	C3	90201-120E6	C10
23X-27411-02	D10	90109-085E2	B2	90179-28602	C13	90201-120E6	C12
34K-27421-00	D10	90109-085E3	B12	90179-28603	C13	90201-123E8	C13
3TB-81410-00	D13	90109-085F5	D10	90185-06830	D15	90201-12474	C5
3TB-81450-00	D13	90109-08705	C6	90185-06830	E5	90201-13202	C6
4GV-81800-00	B15	90109-10690	C12	90185-06830	C8	90201-141A3	B4
3AJ-81801-00	B15	90109-10700	C12	90185-06837	E3	90201-142M6	C10
3AJ-81809-00	B15	90109-10702	C10	90185-06837	D14	90201-15238	C10
3AJ-81820-00	B15	90109-10703	C10	90185-06837	E6	90201-17327	C2
3AJ-81830-00	B15	90109-12701	C10	90185-08838	B12	90201-200R4	D6
11H-81844-00	B15	90110-05835	E6	90185-10037	C13	90201-20276	C3
26H-81847-00	B15	90110-08193	D13	90185-10060	C6	90201-301F4	B4
3AJ-81850-00	B15	90111-06806	C9	90185-10060	C6	90201-303P4	B15
3AY-81940-00	E5	90111-08801	D10	90185-10060	C6	90201-365M5	C13
12R-81950-01	E5	90116-06475	B2	90185-10120	C10	90202-05187	C9
4.X-81960-A2	E5	90116-10263	B13	90185-10120	C12	90202-05193	D2
26L-82131-00	E5	90116-10378	B2	90185-10120	C12	90202-14077	C13
2UJ-82150-02	E5	90116-10506	B13	90185-12119	C10	90204-08802	B12
148-82151-00	E5	90119-06097	C8	90185-12119	D10	90206-06090	B12
3TB-82305-00	E5	90122-05010	B8	90185-14070	C10	90206-06090	B12
4GV-82310-00	E5	90123-08046-BL	D8	90185-18104	D6	90206-12075	B5
371-82370-00	E5	90149-05110	B7	90201-047A2	E9	90209-05279	B14
3TB-82501-10	E5	90149-06272	D5	90201-06072	E2	90209-22191	C3
4KM-82540-00	E6	90149-06272	D7	90201-06765	C6	90209-22191	C3
3LD-82566-40	E6	90149-08067	C2	90201-08083	D11	90215-16242	B4
10V-82599-00	E4	90151-04048	C10	90201-08087	C2	90215-20197	C2
1LN-82911-00	E4	90151-06017	C4	90201-08087	C9	90215-20231	C2
33G-82913-01	E4	90151-06025	C6	90201-080L8	B3	90215-23265	C3
2GV-82917-00	E6	90151-06805	C10	90201-08326	B12	90240-08124	D11
3WV-83371-01	E6	90159-06016	C2	90201-083P5	D10	90240-10101	D10
3FA-83912-00	E4	90159-06078	C4	90201-085L3	B3	90267-40073	B8
437-83936-01	E4	90164-06017	B12	90201-08753	C6	90267-40073	B8
3TB-8397A-00	E4	90177-34314	D11	90201-098E7	C6	90267-48079	C6
90101-08859	C9	9017C 04128	B5	90201-100A1	C13	90280-16053	B4

NUMERICAL INDEX

PART NO.	GRID NO.	PART NO.	GRID NO.	PART NO.	GRID NO.	PART NO.	GRID NO.
90445-09878	D2	91317-06025	B2	92907-05600	D13	93210-10197	B7
90445-10877	D2	91317-06025	B6	92907-06100	C6	93210-13016	D11
90445-11748	C9	91317-06025	B14	92907-06100	D13	93210-13361	B14
90460-46206	B8	91317-06025	B14	92907-06200	C2	93210-13361	B7
90460-51059	B8	91317-06030	B13	92907-06600	B6	93210-13657	B2
90460-58015	B8	91317-06030	B14	92907-06600	B2	93210-15171	B7
90462-16102	B14	91317-06035	B14	92907-08100	C6	93210-19522	B2
90465-08028	B8	91317-06035	B3	92907-10100	C6	93210-32172	B2
90465-08344	B13	91317-06035	B7	92907-10600	D10	93210-36510	B14
90467-10008	C9	91317-06035	B14	9290L-05600	E5	93210-36549	B8
90467-10035	B8	91317-06035	B14	9290L-06100	E2	93210-62446	B2
90467-11832	D11	91317-06040	B2	9290L-06100	C10	93210-64297	B7
90467-11832	D2	91317-06045	B13	9290L-06100	D2	93210 97524	B3
90467-14015	B13	91317-06050	B2	9290L-06200	D3	93306-00316	D4
90467-17128	B13	91317-06050	B14	9290L-06200	C8	93306-00426	C3
90467-20030	B8	91317-06050	B14	9290L-06200	D14	93306-00431	C3
90480-12845	C8	91317-06055	B2	9290L-06600	C14	93306-004X8	D6
90480-13398	B8	91317-06060	B13	9290L-06600	D11	93306-20006	B15
90480-13398	C9	91317-06080	B7	9290L-06600	E6	93306-304X0	D6
90480-14229	C6	91317-06115	B2	9290L-06600	D3	93306-30525	B4
90480-14865	D15	91317-06125	B2	9290L-08100	C6	93306-30535	C3
90480-16185	C8	9131L-06012	E6	9290M-05600	E2	93306-30540	C3
90480-17850	C9	9131L-06012	D11	9290M-06100	C10	93306-30560	B4
90480-17850	C9	9131L-06014	C14	9290M-06600	C5	93306-30702	B4
90501-043E0	B7	9131L-06016	D3	9290M-06600	C6	93310-212R6	B15
90501-22721	B4	9131L-06016	E2	9290M-06600	C8	93310-217R7	B15
90501-23142	C2	9131L-08025	C14	9290M-08200	C9	93310-530C7	B15
90504-18031	D10	9131M-03008	D2	92990-04100	B10	93310-635D4	B4
90506-18838	D11	9131M-06012	C6	92990-04100	B10	93315-11720	C2
90506-35473	D10	9131M-06016	B14	93101-14092	B14	93315-31732	C10
90508-14710	C2	9131M-06016	B7	93101-25106	B4	93316-00501	C4
90508-20583	D10	9131M-06020	D14	93101-28828	D6	93317-11020	C2
90508-26691	C4	91401-16012	D11	93102-12321	C5	93317-32034	C10
90508-29629	C5	91401-25020	D10	93102-17357	C2	93317-32231	C10
90560-17379	D4	91490-20020	C13	93102-25226	C3	93332-00067	C13
90560-20199	C3	91810-05018	B3	93102-28667	D6	93332-00068	C13
90560-25283	C3	9201L-06012	E5	93106-22019	C10	93342-22208	C10
91311-08025	C14	9201L-08012	D7	93106-22032	D4	93440-11024	B15
91317-06010	D8	92900-06400	B12	93108-35004	C10	93440-12052	B2
91317-06016	B7	92907-04200	B8	93109-20029	C10	93440-25084	C3
91317-06018	B2	92907-04200	B8	93210-038C3	D15	93440-25084	C3
91317-06020	B8	92907-05100	E4	93210-07135	B7	93450-24028	B4
91317-06020	B2	92907-05100	D13	93210-07135	B13	93503-08007	B7
91317-06025	B14	92907-05600	B8	93210-08521	B5	93515-32029	C2

NUMERICAL INDEX

PART NO.	GRID NO.	PART NO.	GRID NO.
9701L-06016	C8	99510-08016	B13
9701L-06016	D2	99510-08016	B13
9701L-06016	D3	99510-08016	B3
9701L-06040	D15	99510-10114	B2
9701L-08016	C6	99510-12016	B14
9701L-08020	C6	99510-12016	B14
9701M-06014	C8	99510-12016	B13
9701M-06016	C10	99510-14016	B13
9701M-06025	C5	99999-01798	C3
97027-06014	C3		
9731L-05012	E2		
9731M-06010	B12		
97701-40132	E3		
98507-05010	B14		
98507-05010	B10		
98507-05016	B8		
98507-05016	D13		
98507-05020	E4		
98507-06012	B14		
98507-06016	B7		
98507-06016	B7		
98507-06025	D13		
9850L-05016	C13		
9850L-06014	D2		
9850M-05014	D4		
9850M-05016	E4		
9850M-05030	E4		
9850M-05035	E4		
9850M-06010	C9		
98580-04010	B10		
98580-04010	B10		
98580-04014	B10		
98580-04016	B10		
98580-04020	B10		
98707-06012	B13		
98980-06010	B12		
99001-09600	C5		
99006-10600	C5		
99009-11400	B7		
99009-20400	C3		
99009-20400	C3		
99243-00160	D12		
99244-00080	D12		
99510-08016	B14		

NUMERICAL INDEX

CONTENTS

GENERAL SPEC.

ENGINE

Fig. 1	CYLINDER HEAD	1
Fig. 2	CYLINDER	2
Fig. 3	CRANKSHAFT - PISTON	3
Fig. 4	VALVE	4
Fig. 5	CAMSHAFT - CHAIN	5
Fig. 6	OIL PUMP	6
Fig. 7	INTAKE	7
Fig. 8	CARBURETOR	9
Fig. 9	EXHAUST	11
Fig. 10	CRANKCASE	12
Fig. 11	CRANKCASE COVER 1	13
Fig. 12	STARTER	14
Fig. 13	CLUTCH	15
Fig. 14	TRANSMISSION	16
Fig. 15	SHIFT CAM FORK	17
Fig. 16	SHIFT SHAFT	18

CHASSIS

Fig. 17	FRAME	19
Fig. 18	FENDER	21
Fig. 19	SIDE COVER/OIL TANK	22
Fig. 20	REAR ARM	23
Fig. 21	REAR SUSPENSION	25
Fig. 22	STEERING	26
Fig. 23	FRONT FORK	27
Fig. 24	FUEL TANK	29
Fig. 25	SEAT	30
Fig. 26	FRONT WHEEL	31
Fig. 27	FRONT BRAKE CALIPER	32
Fig. 28	REAR WHEEL	33
Fig. 29	REAR BRAKE CALIPER	34
Fig. 30	STEERING HANDLE, CABLE	35
Fig. 31	FRONT MASTER CYLINDER	36
Fig. 32	STAND/FOOTREST	37
Fig. 33	REAR MASTER CYLINDER	38
Fig. 34	EMBLEMS	39
Fig. 35	GENERATOR	40
Fig. 36	FLASHER LIGHT	41
Fig. 37	METER	42
Fig. 38	HEADLIGHT	43
Fig. 39	TAILLIGHT	44
Fig. 40	HANDLE SWITCH, LEVER	45
Fig. 41	ELECTRICAL 1	46
Fig. 42	ELECTRICAL 2	47

INDEX (GENERAL SPEC.)

NUMERICAL INDEX

INDIVIDUAL SPEC.

Fig. 43	FRAME	48
Fig. 44	FENDER	49
Fig. 45	STAND/FOOTREST	50
Fig. 46	FLASHER LIGHT	51
Fig. 47	ELECTRICAL 1	52

INDEX (INDIVIDUAL SPEC.)

NUMERICAL INDEX

INDIVIDUAL SPEC.

H₂

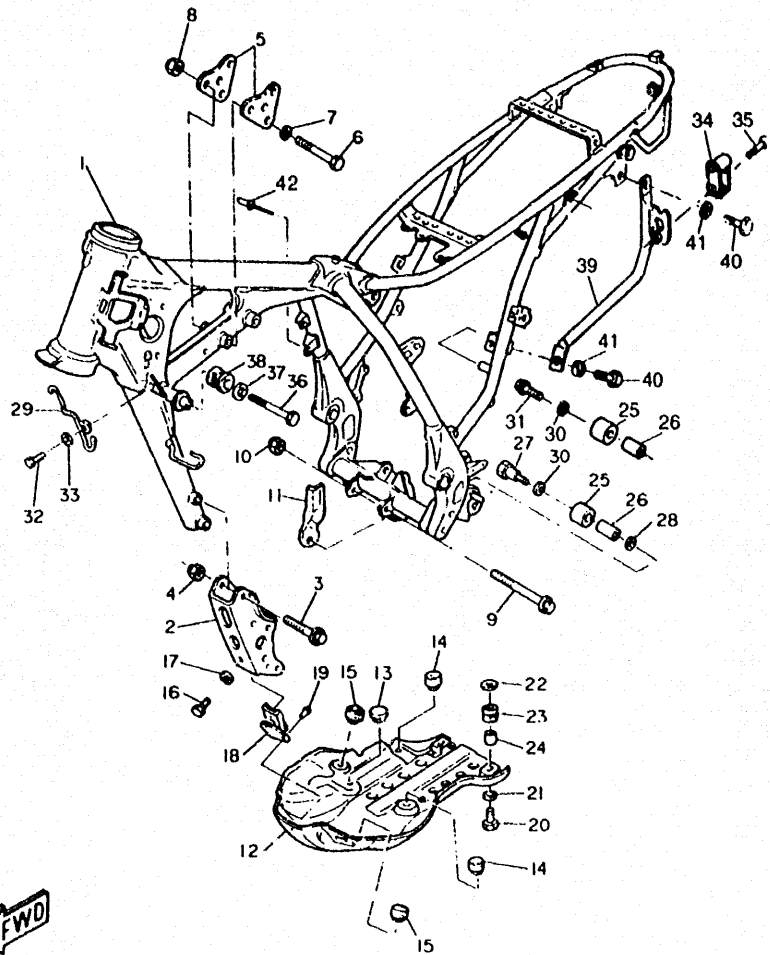


FIG. 43 FRAME

REF. NO.	PART NO.	DESCRIPTION	Q.TY	REMARKS
1	4LW-F1110-10-UJ	FRAME, COMPL.	1	• UR. RADICAL WHITE
42	90267-32018	RIVET	2	•



4LW3300 6430

H3

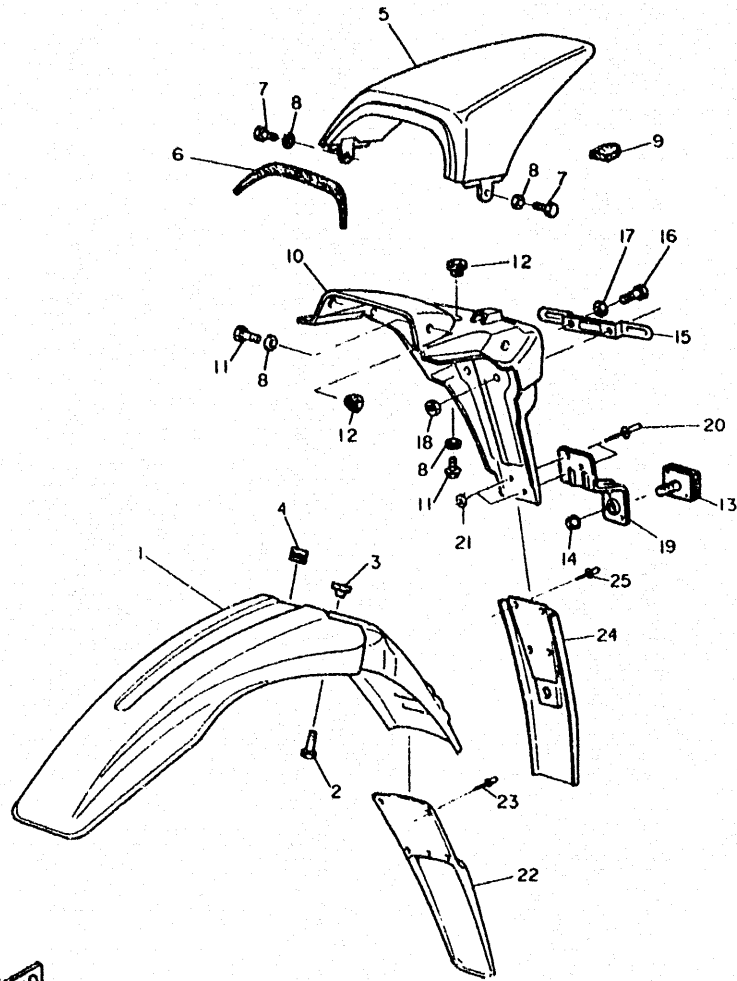


FIG. 44 FENDER

REF. NO.	PART NO.	DESCRIPTION	Q.TY	REMARKS
19	4LW-H5132-00	BRKT., 1	1	*
20	90267-48839	RIVET	2	*
21	92906-05600	WASHER, plain	2	*
22	4LW-F1521-00	FLAP, FRONT	1	* ONLY FOR GERMANY
23	4LW-F1539-00	RIVET	5	* ONLY FOR GERMANY
24	4LW-F1621-00	FLAP, REAR	1	* ONLY FOR GERMANY
25	4LW-F1539-00	RIVET	4	* ONLY FOR GERMANY



4LW3300 6440

H4

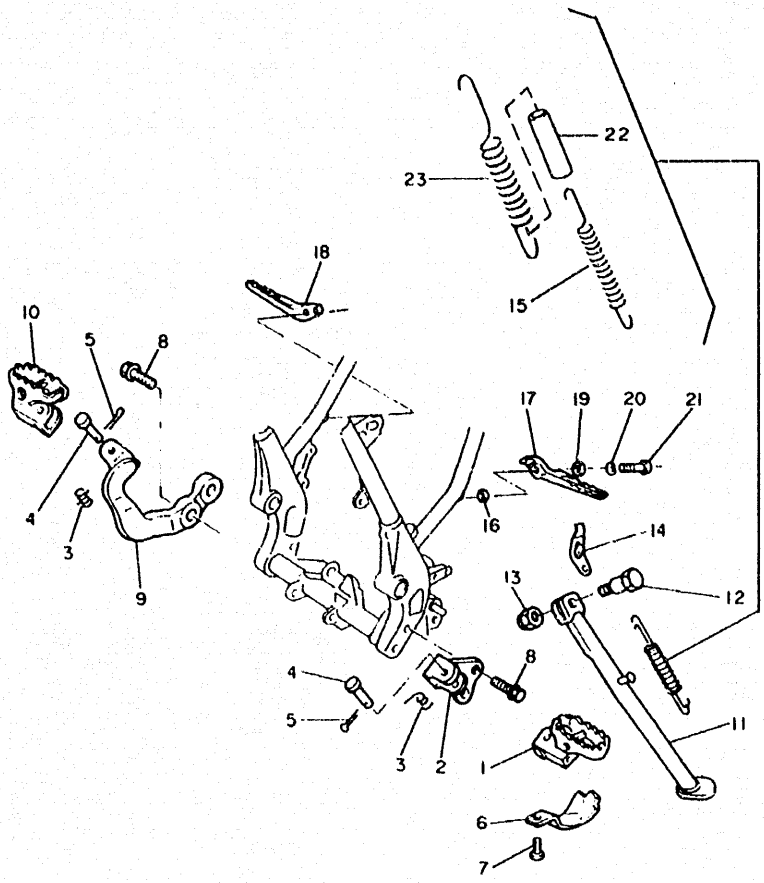


FIG. 45 STAND./FOOTREST

REF. NO.	PART NO.	DESCRIPTION	Q.TY	REMARKS
15	90506-20846	SPRING, tension	1	*
22	4LW-F7351-00	GUIDE, side stand	1	*
23	90506-32845	SPRING, tension	1	*



4LW3300-6450

H5



4LW1300-3530

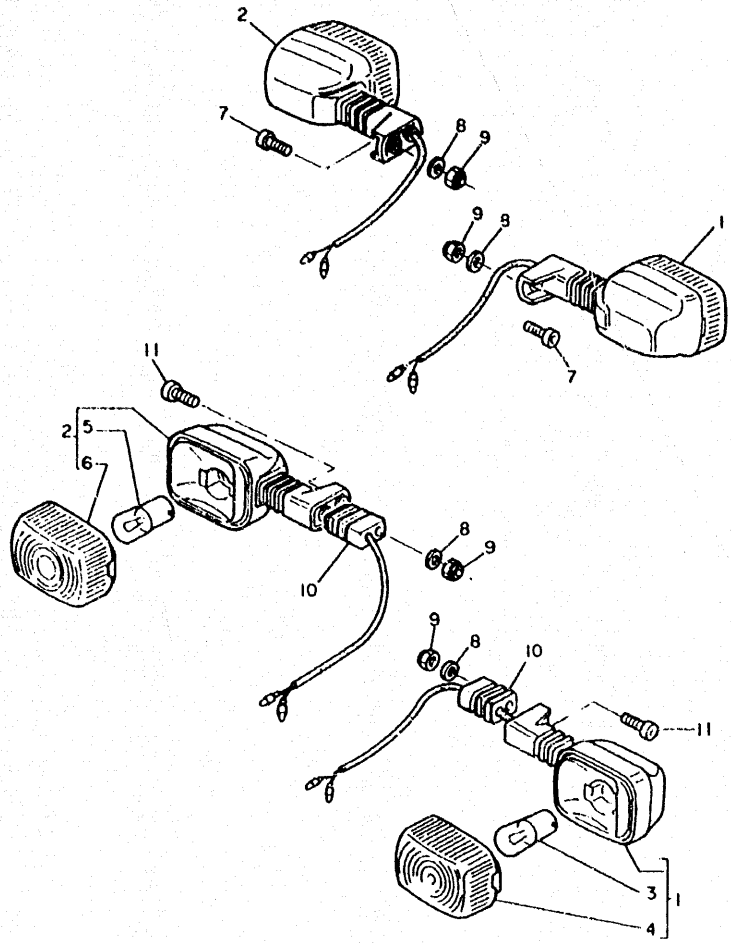


FIG. 46 FLASHER LIGHT

REF. NO.	PART NO.	DESCRIPTION	Q.TY	REMARKS
7	9131M-06020	BOLT, hex.	2	•
10	4LW-H3318-00	STAY, flasher 1	2	•
11	9131M-06050	BOLT, hex.	2	•

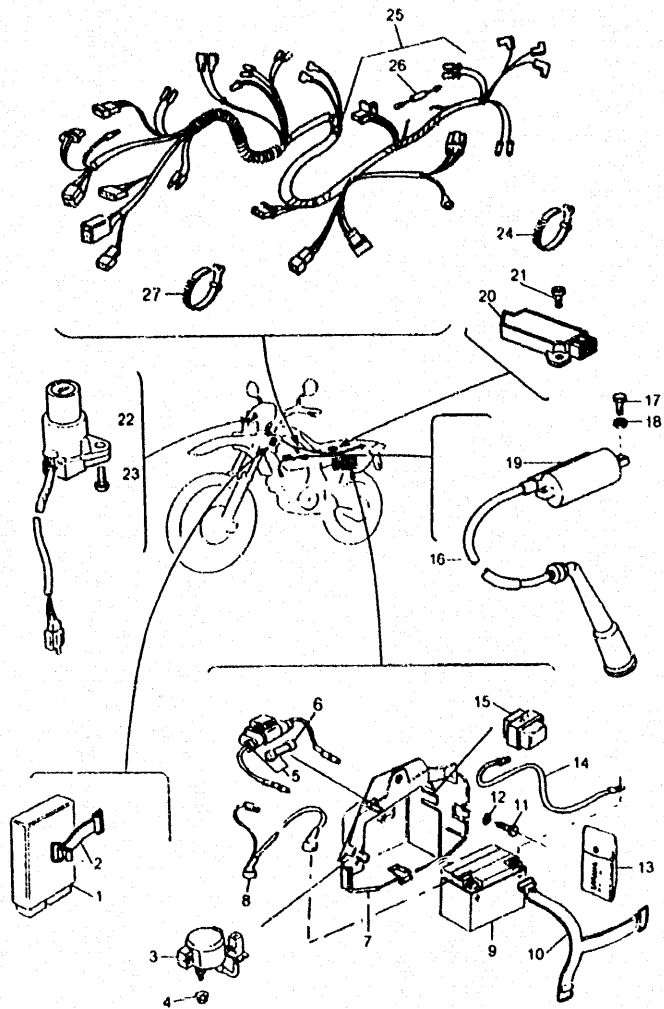


FIG. 47 ELECTRICAL 1

REF. NO.	PART NO.	DESCRIPTION	Q.TY	REMARKS
13	4LW-F8100-10	TOOL KIT	1	



4GV2354-4440

H7

INDEX
(INDIVIDUAL SPEC.)

NUMERICAL INDEX

PART NO.	GRID NO.				
4LW-F1110-10-U	H3				
4LW-F1521-00	H4				
4LW-F1539-00	H4				
4LW-F1539-00	H4				
4LW-F1621-00	H4				
4LW-F7351-00	H5				
4LW-F8100-10	H7				
4LW-H3318-00	H6				
4LW-H5132-00	H4				
90267-32018	H3				
90267-48839	H4				
90506-20846	H5				
90506-32845	H5				
9131M-06020	H6				
9131M-06050	H6				
92906-05600	H4				

NUMERICAL INDEX